

HGTV Library

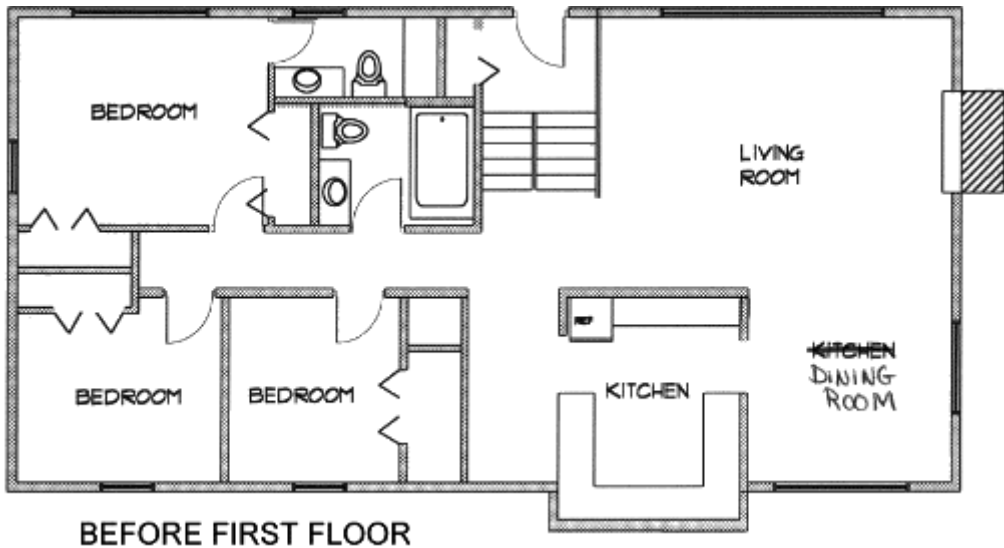
Episode 229

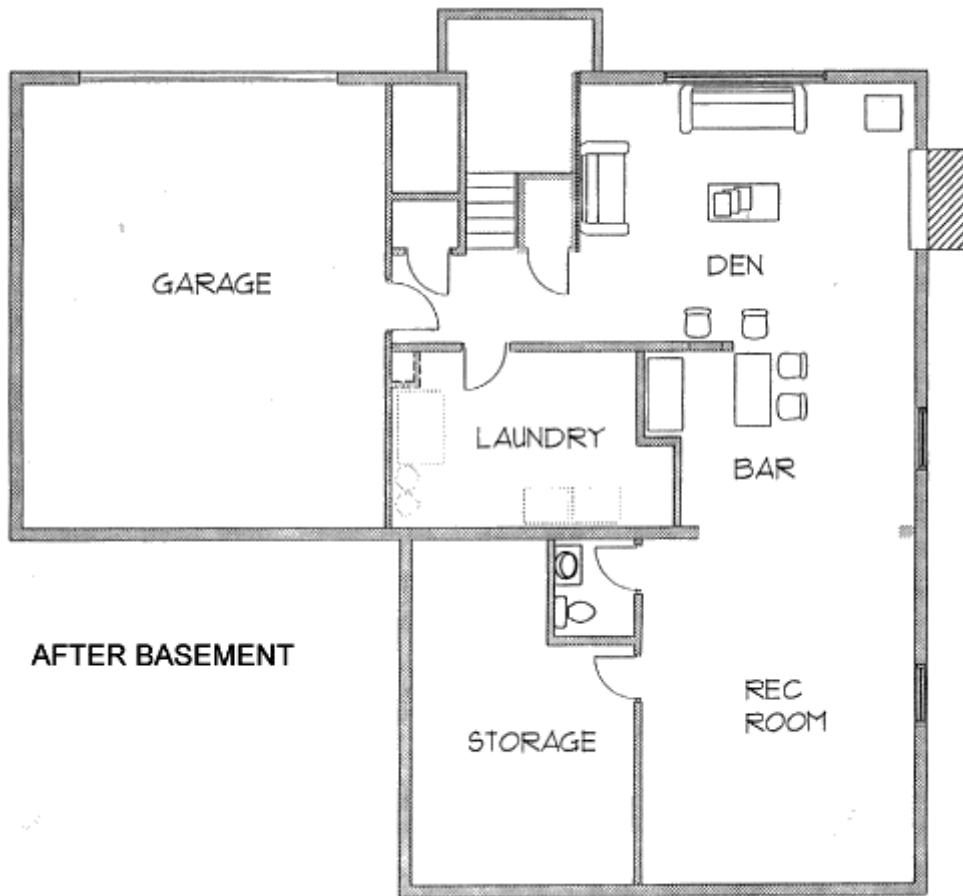


Before

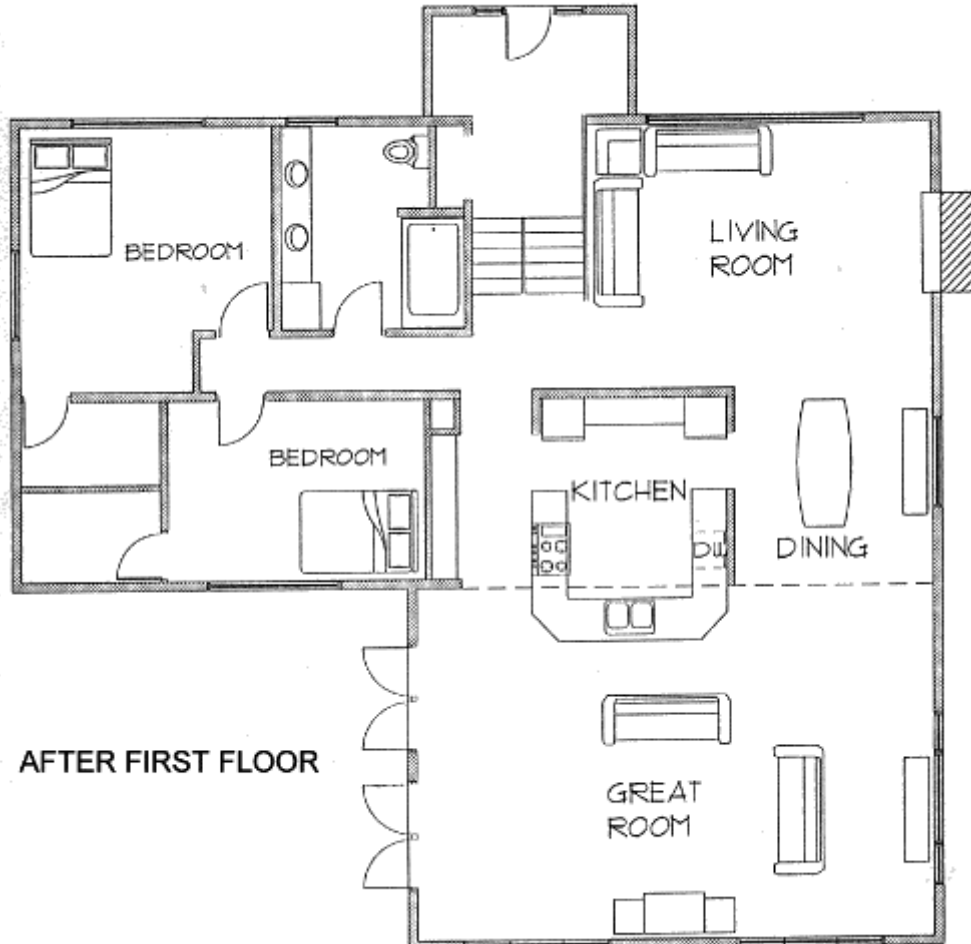


After

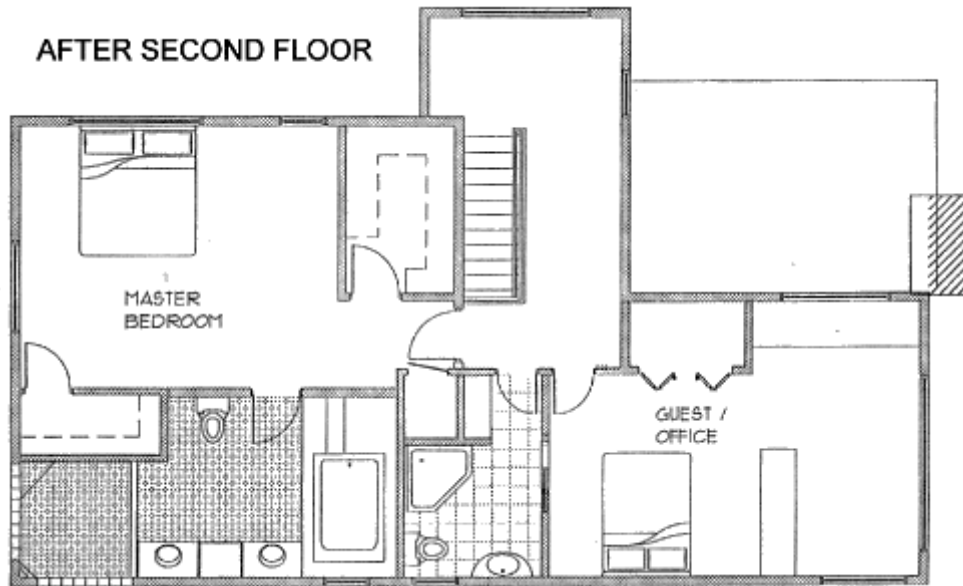




AFTER BASEMENT



AFTER FIRST FLOOR



Designer:

Milton Fleitas
 5137 Abercrombie Drive
 Edina, MN 55439
 612-826-0068 or 612-474-3291

Products & Services:

Windows:

Energy efficient casement windows with Perma-Shield casement. The windows combine contemporary beauty with convenience and low maintenance. A long time staple to many builders, the Andersen casement windows are anything but standard. Features include high performance low emissivity glass, natural wood interiors for easy painting and staining, and low-maintenance Perma-Shield exterior cladding in white, sandtone or Terratone color.

Andersen Windows, Inc.
 100 Fourth Avenue North
 Bayport, MN 55003-1096
 Contact: Stacy Einck
 Phone: 1-800-426-4261 ext. 1232
 Website: www.andersenwindows.com

Nylon House #'s:

Fantasia Showroom
 International Market Square
 275 Market Street, #102
 Minneapolis, MN 55405
 Contact: Andrea Harris and Barbara Farrell
 Phone: 612-338-5811
 Fax: 612-338-7866

Custom Light Fixtures:

Cartier Lighting
 151 Cheshire Lane
 Plymouth, MN 55441
 Contact: Tom Cartier
 Phone: 612-476-9555
 Fax: 612-476-1757
 E-mail: tcartier@cartierlighting.com

Kitchen:

Cabinets: Frameless European style with no knobs or handles. Mondolf style, high gloss white color,

polyester sprayed finish (sprayed for extra durability and to make it easier to clean).

Countertops: Northwestern Tile & Marble.

Granite, Sierra White, 11/4 slab, polished finish. The gloss finish coordinates with the cabinets and is very durable and heat resistant.

Children's Bathroom:

Sienna Maple Style, Midnight Blue color, clear polyester finish, maple veneer slab doors with polyester finish. Glass tiles.

Canac Kitchens Ltd. Corporate Office:

360 John Street

Toronto, Ontario

Canada

Phone: 905-881-2153

Fax: 905-881-9725

Canac Kitchens Ltd. Minnesota Office:

7025 France Avenue South

Edina, MN 55435

Phone: 612-922-8944

Fax: 612-922-4240

Contact: Bennet Johnson

Website: www.sterlingplumbing.com/home.html

Master Bath:

Marienbad border (1 x 1 blue and white) inserted onto 4 x 4 white tiles of the whirlpool tub. It's a composition of porcelain and crystal, and comes in many tones and sizes and easily adaptable to all decorative compositions.

Guest Bathroom:

Glass tiles are crafted from hand-cut, layered, and fused art glass. At time of order, each tile is cut to size. Embedding the imagery between two sheets of clear glass, the tiles are hand painted and fired in a fusing kiln. The paint is captured between the layers, keeping its richness. The tiles are highly durable, easy to clean, and can be installed like any other tile. They can be installed outside or indoors.

Glass and Stainless Steel Lavatory: Contemporary bathroom ensemble consisting of a wall mounted chrome plate frame which supports a rounded, clear tempered glass countertop with a drop in basin.

Window Coverings, Plumbing Fixtures & Light Fixtures:

Budget Power

401 West 84th Street

Bloomington, MN 55420

Contact: Randy Hodel

Phone: 612-881-7891

Fax: 612-881-5040