

glamour for the
modern sewist

Winifred

MAGAZINE



HOST A
Spooky
TEA
PARTY

SEW THE
WEDNESDAY
DRESS

FALL IN LOVE
WITH KNITS

PLAN YOUR
HALLOWEEN
COSTUME

COZY UP IN
FAUX FUR

FALL 2023

A Patreon exclusive
publication by Charm
Patterns by Gertie



36



8



29



35

CONTENTS

Fashion

- [6](#) The Lana Dress reimaged
- [7](#) How to recreate the cover look
- [16](#) Four different Carousel Dress outfits for fall

Sewing

- [12](#) Get inspired to sew faux fur
- [35](#) Nine Charm Halloween costume ideas
- [38](#) Fall in love with knits

Halloween Hacks

- [27](#) The Katrina Crane Dress
- [29](#) The Wednesday Addams Dress
- [32](#) The Spider Queen Dress



Lifestyle

- [20](#) Join Gertie for a Halloween tea party
- [26](#) Persephone's Punch recipe
- [28](#) Gertie's five favorites for entertaining

From the Studio

- [8](#) Behind the scenes with Shameless Photography
- [44](#) Q&A with Angie, Charm's secret weapon
- [47](#) Pets of Charm: Meet Elvira

Community Love

- [5](#) Letter from Gertie: The spookiest time of year!
- [36](#) Creative Halloween makes from the Charm community
- [42](#) A spotlight on Emmy Church, Glamour Circle patron



EDITOR-IN-CHIEF

Gretchen "Gertie" Hirsch

MANAGING EDITOR

Angie Green

ART DIRECTOR

Lindsie Bergevin

PRODUCTION MANAGER

Andrea Lenci-Cerchiara

ASSOCIATE PRODUCTION MANAGER

Kristen Contrera

COPY EDITOR

Aubry Bennett

CONTRIBUTING WRITERS

Jeanette Doherty

PHOTOGRAPHERS

Marina Thompson

Natalie Joos

Shameless Photography

Red Goose Studio

Charm staff

CONTACT US

If you have questions about this publication or would like to contribute, please contact us through our form at CharmPatterns.com/contributor.

THIS MAGAZINE IS INTERACTIVE ONLINE

When browsing the digital version of this issue, keep an eye out for the underlined text! Each one is a link that will take you to related content. We've also linked up page numbers to make navigating this magazine easy peasy.



Vintage by Gertie Magazine is a publication by Charm Patterns by Gertie. It is published quarterly and distributed exclusively to Glamour, Princess, and Inner Circle Patreon members. Copyright 2023, all rights reserved.

Stay in touch

There are so many ways to stay in the loop! Come join us...

INSTAGRAM

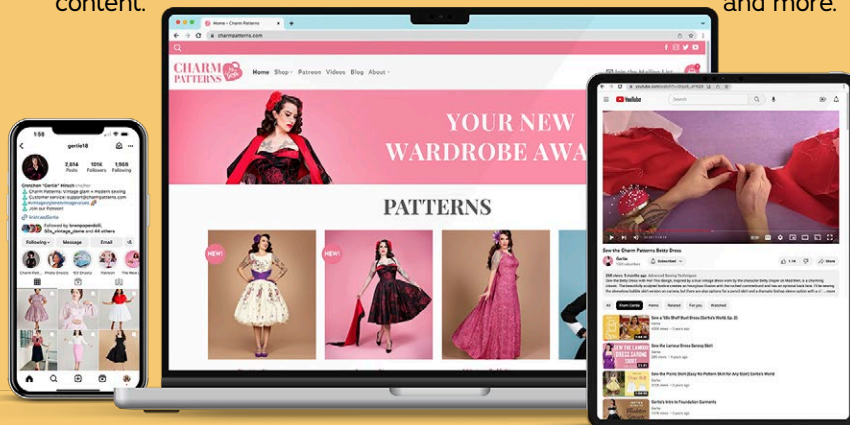
Get inspired with more casual and behind-the-scenes content.

CHARMPATTERNS.COM

Check out the Charm blog and shop sewing patterns and accessories.

YOUTUBE

Improve your sewing skills through tutorials, hacks, and more.



Gertie, I've got a question...

Q: What bra are you wearing under that dress?

A: Haha! This isn't a question from a specific patron, but it's a question that many of you have asked!

I have a "one bra for each dress" rule, which means I choose a bra (or set of undergarments) to wear when designing a dress. That's the only bra that I use when testing and wearing the garment, guaranteeing that the outfit fits just right.

You can find a current list of my favorite foundation brands and recommendations on the Charm website at [Gertie's Ultimate Guide to Foundation Garments](#).

And don't forget, you can always sew your own! If you want to dive into bra sewing, the [International Bra Sewing Bee](#) is an annual week-long virtual educational experience for all levels. At this year's Bee, [Monica O'Rouke Bravo](#) taught a class on how to add an internal bra to any dress, using this gorgeous cherry-print Liz Dress as the example. While bra sewing is an intermediate-level sewing skill, the [Vargas Panties](#) and the (unfortunately out of print) Butterick 6643 waist shaper are a great place to start creating underpretties that you love.



xoxo, Gertie

LETTER

FROM THE
EDITOR



Dear Society member,

Happy spooky season!
At Charm, we look forward to this time all year round. It's a little sad to say goodbye to summer, but the promise of cozy fall days, ghoulish glamour, and a bit of fantasy sewing helps ease the transition for me.

Halloween has always inspired me, from the time my mom made me a peach satin princess ball gown as a kid, complete with '80s puff sleeves and a basque waist. Whether you love pastel frocks or the more gothic side of things (or both, like me!), there's something for everyone this time of year.

In this issue, we are fully indulging our love of Halloween with some very glam-macabre looks, a peek into how we develop Charm's annual Halloween Extravaganza pattern hacks, and a

spotlight on a patron who brings an endless supply of spooky goodness to her sewing projects. One of my favorite features is the behind-the-scenes look at Team Charm's Halloween tea party, complete with an Addams Family-inspired custom tea set, a black velvet cake, and other scary-good treats.

Of course, we've got our usual focus on sewing techniques in this issue as well! As the days turn chillier here in New York, we love working with faux fur (okay, maybe we don't always love the process—but we love the results!), so we're sharing our best tricks for working with this coziest of fabrics. We're also sharing our top knit fabric tips from the studio since we've had such a great reaction to all the knit patterns we've released this year.

In some sad news, my beloved cat Henry (star of last issue's Pets of Charm feature) passed in July. He was such a big part of Charm from the beginning, and I know you all loved him too. Every day with expert snuggler Henry was a gift, and he is dearly missed. Please hug your fur babies extra tight for me!

xoxo, *Gertie*

P.S. Are you subscribed to our weekly newsletter? Hopefully, you saw the announcement for my next book, [Gertie's Charmed Sewing Studio](#), which will be released in spring 2024. It's been a ton of fun working on it behind the scenes, and I can't wait for it to be in your hands!

OUTFIT BREAKDOWN

Vamp your look
with layers of spine-tingling jet necklaces and earrings.

Find jet bead chokers and longer necklaces on eBay, Etsy, and in vintage shops.

Jet black teardrop earrings
(similar to shown)

Ward off spooky chills
with opera-length gloves.

Black long sheer gloves
from What Katie Did
Or try sewing Charm's Jeanne Gloves pattern
(Glamour Circle+)

Shine darkly
in obsidian from head to toe.

Black-on-black floral brocade
Black abstract metallic brocade

Ooze mystery
with a ghoulish tiara.

The Maleficent Tiara
from Rita Lane Vintage

Creep around
in a gothic fantasy extreme petal dress.

Lana Dress
(See how we hacked it on [page 32](#).)

Gertie's B6643 waist-cincher
(out-of-print Butterick pattern)

Dark GLAMOUR

IN THE LANA DRESS

Tower over your lackeys
with spiderweb shoes.

Black velvet Adele platforms
from Von D Shoes



GOTHIC

Allure

WANT TO RECREATE THIS SPIDER QUEEN LANA DRESS LOOK? HERE ARE MY TOP RECOMMENDATIONS.

Cast a spell with these bewitching and dramatic [gloves!](#)



[Black Crystal Teardrop Earrings](#)



You'll rule the night in this fierce [spikey tiara.](#)

These Victorian-style accessories are an inexpensive alternative to vintage jet beads.

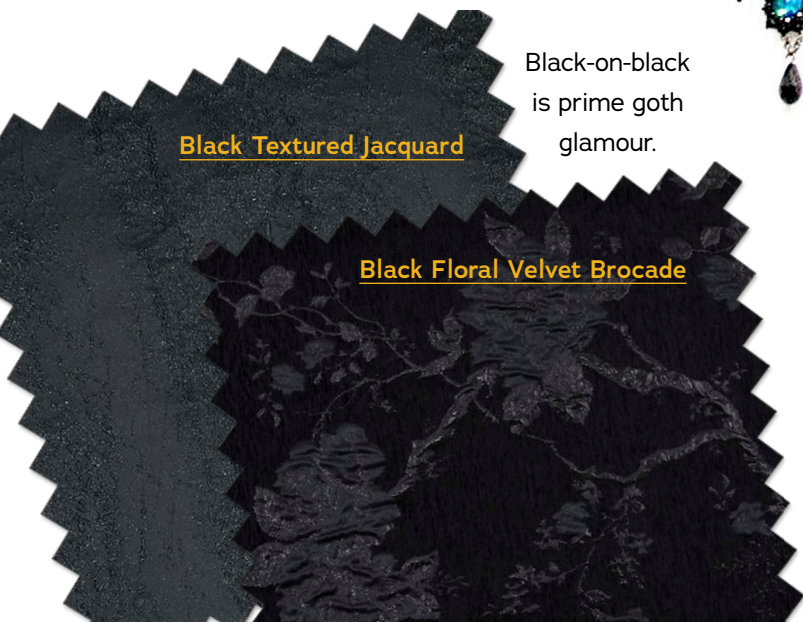


[Gothic Victorian Chokers](#)

[Black Textured Jacquard](#)

Black-on-black is prime goth glamour.

[Black Floral Velvet Brocade](#)



More [spiderweb heels!](#)



Sophie Spinnelle

Was Called to

Capture MAGIC

BY
JEANETTE
DOHERTY
PHOTOS BY
NATALIE
JOOS

Before founding Shameless Photography, Sophie Spinnelle worked at a policy institute, studied mediation, and even toyed with being a locksmith. But nothing really fit until she zoomed in on vintage images with a critical eye. “I had this idea to take photographs of people—everyday people—but to transform them into vintage starlets,” she shares. “I was one of the only people at that time doing body positive retro work.” From her first photoshoot she fell in love, and clients loved her work.

Lucky for us, Shameless has sprinkled that magic on Charm photos since 2017, with additional photography by New York-based photographer Angela Altus and photo editing by Sophie. It’s a relationship Sophie relishes. “It was a natural fit from the beginning,” she recalls. “Gertie and I share a ‘glam with an edge’ aesthetic; we are both women business owners and are both deeply committed to inclusivity. I feel so lucky to be collaborating with her. She’s truly one of the most creative, committed, and visionary people I’ve ever met.”

Sophie’s personal work is also visionary—she uses photography as a tool of social change. “Fantasy is used all the time in advertising to create extremely strong emotions and compel people,” she explains. “I want to harness that power to create images that explode the way society views women. A few years back, I did a series called Modern Conception that took on maternity photos in very

Continued, page 10



“I LOVE HOW GERTIE
INSPIRES US ALL TO
STEP OUTSIDE OF
THE CONSTRAINTS OF
PRE-MADE CLOTHES
AND CREATE THINGS
THAT ARE TRULY
UNIQUE...”

unusual ways, and now I'm doing projects that challenge assumptions about parenthood, femininity, queerness, and mental health.”

Parenthood is a focus in Sophie's personal life as well. “My wife and I are constantly struck when watching our two kiddos learn to talk, to dance, and to read—watching them blossom into themselves,” she shares. “It is more amazing than any fantasy I could have come up with.”

One way Sophie encourages her children to blossom is by giving them free reign to choose their own Halloween costumes each year. Last year, her oldest requested to be a brave cactus princess. “I made her a dress with cacti on it, a little cactus-themed tiara, a sword, and a heart-shaped shield,” she recalls. “I love that kids can communicate their identities through costuming and attire, so I do that with her as much as possible. I want her to know that anything is not just possible but welcome in our family.”

Using style to speak to identity is a theme that draws Sophie to Charm Patterns. In fact, she attributes her recent return to sewing to Gertie. “I love how Gertie inspires us all



to step outside of the constraints of pre-made clothes and create things that are truly unique, that can actually communicate about who we are,” she notes. “You can't buy that level of authenticity off the rack, and that's been profoundly inspiring for me.”

For more information, visit her websites at SophieSpinelle.com and ShamelessPhoto.com.

Follow Sophie on Instagram [@shamelesspinup](https://www.instagram.com/shamelesspinup) or on Facebook at [Facebook.com/ShamelessPhoto](https://www.facebook.com/ShamelessPhoto).

Lights, Camera, Charisma!

BY JEANETTE DOHERTY

Sophie's spent years making magic through Shameless Photography, and she highly encourages you to capture some yourself—through your own fantasy photo shoot. "I started my business in my living room, so you can do this. Do it!" Sophie cheers. How do you do it? Here are some of Sophie's best tips!

SET THE STAGE

Find an area in your house that you think is beautiful, whether it has a vintage vibe or it's simply lovely in some way. Then remove every single distraction. Whenever I do shoots on location we spend a huge amount of time moving furniture around because you can't change that in post. So decide what you want in there, and if an element is not needed, remove it.

FIND YOUR LIGHT

Some of the most gorgeous, readily available light is a type of shallow light that happens in a somewhat dim area when bright light comes in indirectly. For instance, when you're standing in a window but the light is not actually shining right on your face, it's just bouncing around and coming in from all different directions. That light glows in a way that looks magical!

PLAY WITH CHARISMA

Use a story to turn on your charisma. Decide that the camera is a particular person and send them a very strong message. You could charm them, seduce them, even coolly reject them. Whatever the message is, wholly commit to it and really go there. It's a wonderful way to explore different sides of yourself.

LOVE YOUR BODY

Before the shoot, take steps to feel your best. And that's personal to everyone. Whether you want to pamper yourself and get a massage, take a long walk and move your body, or have your favorite meal beforehand—do whatever helps you feel embodied and grounded. Definitely don't starve yourself before a shoot. It's so much more important to feel truly good in all the ways that you can.

PERFECT IN POST

Ideally you want to make the shot as clean as possible in person so that few edits are needed. Remove distractions from the background, smooth the fabric and remove lint, and perfect your hairstyle and makeup. Beyond that, I think contrast, color balance, and saturation are some of the most powerful simple editing tools in order to change the overall feel and mood of your shots.



"Gertie envisioned beautiful blossoms all over," Sophie recalls. "I spent at least 6 hours in Photoshop individually adding blossoms to trees, sprinkling them over the grass and the bushes, making it look dreamy. Editing is meditative for me. It makes the world feel both more manageable and more magical."

TIPS
& TRICKS



Brrrr!

BABY, IT'S COLD OUTSIDE!

Nothing says vintage glamour like a fur coat, but wearing real fur is so passé. Thankfully, faux fur is an equally luxurious option that is just as beautiful!

We love using it, but faux fur can be a bear to sew, so here are some of our favorite tips for taming this specialty fabric.



CHOOSE THE RIGHT PATTERN

- **Thick furs can be bulky** and details will get lost, so look for simple patterns without darts, gathers, or complex elements. I dream of creating a faux fur [Swing Coat](#) for the ultimate in winter glam.
- **Faux fur is great for accessories**, like [this Peggy Collar and Muff](#) (a free pattern available on Charm's website).
- **Using faux fur as trim** on a complex pattern means you get the best of both worlds! We've used faux fur to trim the [Peter Pan Bolero](#), the [Princess Coat](#), and the [Charm Scout Capelet](#).

PREPARING YOUR FABRIC

- **Pre-washing** the fur is not necessary before sewing (as it's likely a polyester/acrylic blend), but you can wash it in cool water with a gentle cycle and tumble dry on low. Do not use fabric softener and do not iron.
- **Brush out your fur** to catch as many stray hairs as possible. Faux fur sheds like crazy and you don't want those fibers all over your sewing room.
- **Wear a mask** as you're working to avoid breathing in fibers.



CUTTING

- **Most faux furs have a distinctive nap**, so you will likely need more fabric than called for in the yardage requirements. Pay careful attention to the nap as you plan out your cutting layout.
- **Using a Sharpie** or fabric marker, draw the outline of the pattern piece and all markings on the wrong side of the fur before cutting.
- **Cut each pattern piece** a single layer at a time, even if the pattern calls for it to be cut folded. Use a very sharp craft razor (like an Exacto blade or box cutter) to cut just the knit backing. You don't want to cut through the fur itself. Once the knit backing is cut, pull apart the fur fibers. After cutting each piece (or even each side of each piece), vacuum the cut edges to catch any stray bits of fur.



Stroke the faux fur to determine the nap of the fabric.

SEWING

- **When pinning seams**, use pins with a long shank or Wonder Clips.
- **Faux fur usually has a knit backing**, so you'll want to use a stretch sewing machine needle (just like you would with any other knit fabric).
- **A walking foot** can be very helpful, especially if the fur is very thick.
- **Use a longer stitch length** than usual, about 3–3.5 mm. The thicker the fur, the longer you want your stitch length to be. You can use a straight stitch or zigzag stitch.
- **Before stitching each seam**, comb the fur to the center of the pattern piece. After stitching a seam, comb out the fur from the stitched seam and trim the fur in the seam allowance using applique or duckbill scissors to reduce bulk. Then vacuum up the trimmed bits. Don't save the trimming and cleaning up for last! For each seam, you'll want to stitch, trim, and clean up before moving on to the next seam. (You can also sew seams using a hinge stitch by zigzagging the raw edges together with no seam allowance, but this creates a weaker seam.)
- **Do not press your seams**, as this might melt your fur.
- **Always clean your machine** thoroughly after sewing with fur. Those little hairs will get everywhere!



1 Pattern 4 Looks

Glam & Goth

Wear this little black stunner on its own for a Halloween-party look (or a spooky date night!).

LAYER THE CAROUSEL DRESS TO TRANSITION INTO AUTUMN WITH THESE COOL-WEATHER STYLING TIPS

Beaded black
Charlotte Beret
(Glamour Circle+ pattern)



Spiderweb corset belt



Black
lace fan
(similar)



Black rhinestone
reproduction bangles
(no longer available)



Book of Spells glow-in-the-dark purse



Gold spider shoes



CHARM
ARTIST
GALLERY

CAROUSEL DRESS

A PATREON EXCLUSIVE PATTERN

Get the Carousel
Dress pattern today at
[CharmPatterns.com](https://www.charmpatterns.com)

I sewed this version of the Carousel Dress in a lovely black cotton brocade from my stash. The texture elevates this beyond your basic LBD, while the easy-care fiber makes it ideal for day-to-day wear. The A-line version of this pattern is so wearable on its own and super versatile for layering.

— Gertie

The Overachieving Outfit

Whether you're a student or a boss lady, a black jumper is a must-have.

Pink velvet bowtie
(free tutorial)

White short sleeve
Patsy Blouse
(Charm Pattern)
in oxford cotton

Pink beret



Pink rose
hoops (similar)



Pink
journal
(similar)

Leopard
phone
case



Pink bow heels



Laptop
bag



Black Doesn't Have to Be Serious!

Add some fruity and flirty accessories for a sweet-as-lemonade vibe.



Black gingham [Rita Blouse](#)
(Charm Pattern)

Lemon wedge
earrings
[\(similar\)](#)



Lemon
purse
[\(no longer
available\)](#)



Lemon hair flowers
by La Casa de Flores
(no longer available)



[Black cat-eye
sunglasses](#)



Bangles
([midi](#) and
[narrow](#)
styles)



[Yellow
slides](#)

Chic for the Office

Layer a Missoni-inspired cardigan over your dress and feel smart all day long.

Turner Cardigan
(Glamour Circle+ pattern)
made in textured sweater knit



Cateye sunglasses



Textured gold hoops

Sunburst belt



Striped handbag
from Top Vintage
(no longer available)



Red platform heels





How to host a Halloween Tea Party

BY
GRETCHEN
HIRSCH

Traveling in London made me an ardent admirer of the high afternoon tea tradition, and I love throwing proper British holiday-themed teas for friends.

PICK A THEME

To celebrate my favorite spooky holiday, I decided on “gothic glamour” for both the decorations and the menu.

Create a themed menu so your guests will know what to expect. Team Charm members and friends Susie, Stevie, Mich, and Lauren were all able to attend.





DRESS THE FANTASY

Susie wore her hooded velvet [Society Dress](#) with black leather gloves for dark glamour vibes.

Stevie was spectacular in a spiderweb print rayon '40s-style dress with a vintage tilt hat.

Lauren wore a self-made [Aurora Dress](#) in midnight colors, while Mich made her [Barbara Bodice](#) in skull print satin to fit the theme.

And I created a dress inspired by Tim Burton's *Sleepy Hollow* in black and white striped satin, using our [Carousel Dress](#) pattern and [Waspie Corset Belt](#). Details are on [page 27](#) and look out for sleeve & belt pattern hacks coming soon!





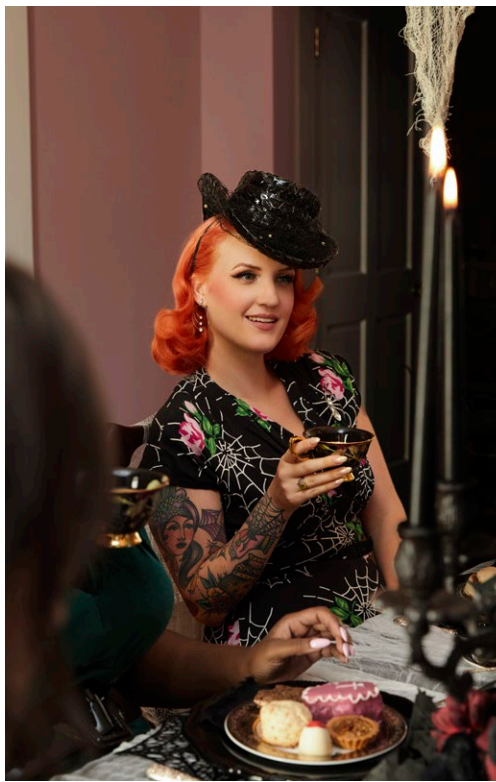
PLAN THE MENU

Think about color when planning the menu. I chose pimento cheese on dark pumpernickel for an orange-and-black scheme and adapted a favorite pastry whirl recipe with black olives for a gothic touch.

It's good practice to serve two contrasting teas; I like to have one black tea and one herbal tea. I served [Magic Hour's Vanilla Earl Grey](#) and [Queen of the Harvest](#) blends. Boil your water in an electric kettle and steep the loose leaf tea in the teapot for the recommended time (I like 4 minutes for herbal blends, 5 minutes for black tea). [This tea timer](#) is an essential daily tool for me!

A good tea menu has at least two sandwiches, scones with a spread, mini pastries, and a showstopper cake.





DESIGN THE DECOR

For a bespoke touch, I had custom plates made with my favorite quotes from *Morticia* and *Wednesday Addams* (see [page 28](#) for details).

I transformed my dining room and foyer with lots of gauze and [black maple leaf garlands](#).

To create a dramatic centerpiece runner, I covered a black table cloth with draped [cheesecloth runners](#) and placed blocks of black floral foam in the center. I created a black and deep burgundy explosion with faux floral stems poked into the foam. It's a good idea to vary the height levels of the florals to add drama.

I decorated individual place settings with [spiderweb placemats](#), black glass charger plates, the tea settings, black napkins, and my grandmother's floral silver.

Tall wrought iron candelabras and black tapered candles evoked the perfect spooky atmosphere for the table.





Persephone's Poison Punch

CHARM'S FIRST SIGNATURE DRINK! THIS BLOOD-RED POMEGRANATE MOCKTAIL IS DELICIOUS AND EFFERVESCENT, WITH A SATISFYING KICK OF GINGER AND LIME

PERSEPHONE'S POISON PUNCH

SERVES 6-10

2 12-oz bottles spicy ginger beer

12 oz pomegranate juice

3 ounces lime juice

3 teaspoons blood orange bitters

1 jar dark cocktail cherries

(I found these at my local grocery store.)

28-oz bottle sparkling water

Mix the ginger beer, pomegranate juice, lime juice, and bitters in a pitcher. Add three ounces of the syrup from the cocktail cherries into the pitcher. Stir. To serve, fill champagne flutes or cocktail glasses two-thirds full with the mixture. Top off with sparkling water and drop a cherry into each glass. If serving in cocktail glasses, pour over ice.

Make the Katrina Dress

INSPIRED BY TIM BURTON'S
SLEEPY HOLLOW, THIS WAS
THE PERFECT TEA PARTY DRESS!



FABRIC & SUPPLIES

- [Carousel Dress](#) pattern
- **Katrina Sleeve** pattern (a Carousel Dress Expansion, available to all patrons in October)
- **Katrina Waspie Belt** pattern (a Waspie Corset Belt alternate pattern, available to all patrons in October)
- Black and white striped silk
- Black grosgrain ribbon
- Black ribbon trim
- Hook-and-eye tape
- Safety pins

INSTRUCTIONS

1. Cut the Carousel Dress Side Front and Dress Side Back pattern pieces on the bias, adding a seamline at the waist. Make the faux bustle by cutting a length of fabric 80 inches (in) (2 m) long, then fold in half right sides (RS) together to create a 40-in (1-m) long piece. Stitch the sides, turn RS out, and pleat one raw edge to match the width of your waistline between the princess seams. Cover the pleated edge with grosgrain ribbon and attach the hook side of the hook-and-eye tape. Attach the eye side of the tape to the dress waistline between the back princess seams. With the dress on a form, create the bustle by taking two lower points on each side and tacking them slightly higher on the bustle, securing to the bustle underlayer and forming a poufy layered effect. Trim the neckline and sleeve hems with black tulle and braid trim.

2. Make the striped Katrina Waspie Belt, pattern matching stripes where possible (not an easy task!), and trim as desired. We applied layered black trim along the upper edge of the belt to match the neckline and sleeve hems, and added black trim along the bottom edge from the inside of the belt so it just peeks out.

5 things I'm LOVING for entertaining

Throw your own Halloween tea party with some of my favorites!



1

DISPLAY

Sweejar Tiered Cake Stand

These lovely cake stands come in several colors and are perfect for serving sandwiches, scones, and pastries.



2

DESSERT

Mosser Glass Cake Stand

Mosser makes the most beautiful glassware, and their cake plates are especially gorgeous. (Look for the coordinating glass domes as well.)

TEA TIME

Gothic Tea Set

Angioletti Designs makes exquisite tea sets, and they can customize any item for you. (They made my quote dessert plates!)

3



4

GLASSWARE

Halloween Champagne Flutes

These creepy flutes add the perfect spooky touch to a fall soiree.



5

BAKING

Teatime Scones Book

Scones are a must at any tea party, and this book has a wonderful variety of sweet, savory, and allergen-free options.



PATTERN

HACK

OUR Wednesday Dress FANTASY

This is an advanced pattern hack of the Grace Bodice, but we love sharing these couture-worthy sewing techniques, and we couldn't resist recreating this designer-inspired dress for you!



So creepy! So kooky! This pattern hack of the Grace Bodice was inspired by the gorgeous Alaiïa dress worn by Wednesday Addams during the Rave’N dance in season one of Tim Burton’s *Wednesday*.

We went all out (four team members, over 33 hours, and 12 yards of silk organza!) to create our fantasy version of this dress, but you can create a costume version with much less effort (see our tips for simplifying this hack below).



Tips to Simplify Your Wednesday Dress

- Use a ruffler foot on your sewing machine.
- Skip hemming and serge all ruffle edges instead.
- Sew all ruffles into the seamline instead of topstitching extra ruffles on top.

FABRIC & SUPPLIES

- 12 yards silk organza (for size 6, more will be needed for larger sizes)
- 1/2 yard skin-toned illusion net for the yoke
- 1 yard black lawn to line bodice front, back, collar, and placket
- An insane amount of black thread
- Thread to match illusion net
- 4 rhinestone buttons
- Black zipper
- Black 1/4-inch (in) fusible stay tape to stabilize zipper opening
- **Self-fabric belt**

NOTES

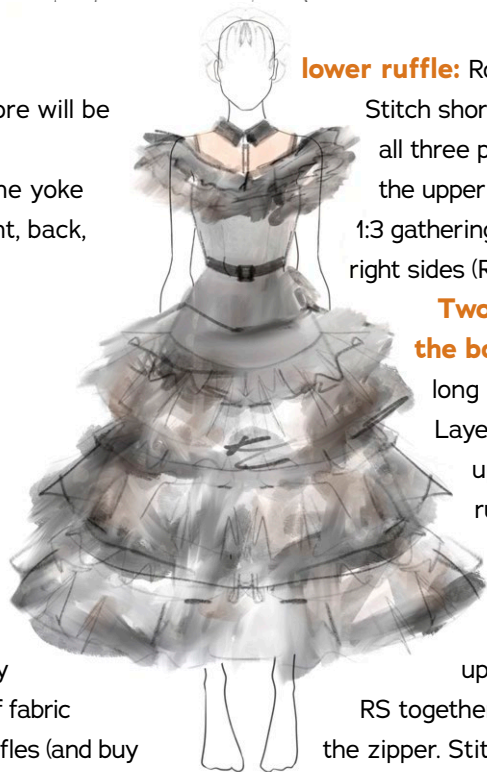
- Fabric and measurements given apply to a size 6 dress and 46-inch width of fabric (WOF). You'll need to create longer ruffles (and buy more fabric) for larger sizes or narrower fabric.
- The skirt is a gathered patio skirt with a ruffle applied into each seamline and an additional ruffle topstitched to the skirt base above each skirt tier seamline.
- A "panel" is a rectangle of fabric cut across the WOF (from selvedge to selvedge). Label each panel as you cut and sew them. It will get very confusing otherwise!
- Use a narrow rolled hemming foot to hem panels. Organza frays like crazy, so serge all seams that are not hemmed.
- When pinning topstitched ruffles, mark the attachment line with tailor's chalk and use LOTS of pins.
- The skirt is sheer, so you'll want to wear a slip or opaque foundation garments.
- For fullness (especially on the bodice ruffles), steam each ruffle layer separately while floofing.

INSTRUCTIONS

Cut the **Grace Bodice** in silk organza with illusion net for the yoke. Cut the lining (for all but the yoke) in black lawn. Sew the Grace Bodice as in the instructions, but apply the bodice ruffles (below) before attaching the yoke to the bodice.

Fold the remaining silk organza lengthwise, then fold lengthwise again. Cut the following panels across WOF using a rotary cutter and use the following instructions to assemble.

Three panels 5 1/2 in (14 cm) wide for the bodice



lower ruffle: Roll hem one long edge of each panel.

Stitch short ends together to create a ring. Layer all three panels and treat them as one ring. Serge the upper edge. Gather the upper edge, using a 1:3 gathering ratio. Stitch ruffle to yoke lower edge, right sides (RS) together, then attach bodice.

Two panels 4 1/2 in (11.4 cm) wide for the bodice upper ruffle: Roll hem both

long edges of each panel. Create a ring. Layer both panels and treat as one. Gather upper edge and topstitch upper edge of ruffle just above bodice/yoke seam.

One panel 9 1/2 in (24.1 cm) wide for skirt tier one: Serge

both long edges of the panel. Gather upper edge and attach to bodice waist,

RS together, leaving open at left side (as worn) for the zipper. Stitch lower 1 in (1.3 cm) of zipper opening closed at panel side seam.

Six panels 9 1/2 in (24.1 cm) wide for skirt tier

two: Create one ring using two panels. Roll lower hem on two other panels and create a ring with them. Layer hemmed ring over unhemmed ring and treat as one. Serge upper edge. Gather upper edge. Stitch ruffle to lower edge of tier one, RS together.

Roll hem both long edges of two panels. Create a ring. Gather upper edge and topstitch to tier one, 3 1/2 in (8.9 cm) above tier one/two seamline.

Nine panels 9 1/2 in (24.1 cm) wide for skirt tier three: Create one ring with three panels. Roll lower hem on three more panels and create a ring. Layer hemmed ring over unhemmed ring and treat as one. Serge upper edge. Gather upper edge. Stitch ruffle to lower edge of tier two, RS together.

Roll hem both long edges of three final panels. Create a ring. Gather upper edge and topstitch to tier two base skirt only, 2 1/2 in (6.4 cm) above tier two/three seamline.

Fifteen panels 9 1/2 in (24.1 cm) wide for skirt

tier four: Roll lower hem on ten panels and create two rings, five panels each. Layer and treat as one. Serge upper edge. Gather upper edge. Stitch ruffle to lower edge of tier three, RS together.

Roll hem both long edges of remaining five panels. Create a ring. Gather upper edge and topstitch to tier three base skirt only, 2 in (5 cm) above tier three/four seamline.



It's almost time for the *Halloween* EXTRAVAGANZA!

Join Team Charm as we plan and create our most creative pattern hacks of the year—and then design your own!

Every Halloween, we celebrate one of our favorite holidays of the year by turning existing Charm patterns into costume creations. It's when we unleash our creativity and let our spooky side shine! Come join us as we plan out this year's projects, and plan a little fantasy sewing for yourself!

STEP 1

Design Your Fantasy

Everything at Charm always starts with a sketch. Gertie has dreamed up some wild ideas for this year, more than we could possibly create!

Collect inspiration on Pinterest or in your sketchbook and dream up your designs. Who do you want to be this year? What's your ultimate costume fantasy? You can never have too many ideas!



Gertie's original sketches for the Spider Queen Lana Dress, Miss Yvonne (*Pee Wee's Playhouse*), Barbie's Solo in the Spotlight dress, and Sally (from *The Nightmare Before Christmas*).





STEP 2

Choose Your Outfit

Or, like Cerie, choose more than one and turn it into a month-long celebration! For this year's Extravaganza, we've hacked the Grace Bodice into the Wednesday Dress (see [page 29](#)), the Lana Dress into a goth-glamour Spider Queen fantasy, and the Carousel Dress into a Sleepy Hollow tea party outfit (see [page 27](#)). (Plus, we have more to share in October, so be sure to follow us on [Instagram](#) for all our Halloween Extravaganza content!)

Charm's huge library of patterns, expansions, and hacks can form the base for your design alterations, so get creative. During the design phase, mixing patterns or pattern elements can help you dream up something new.

STEP 3

Gather Supplies

Go shopping for fabric, notions, and accessories. Every costume needs something special! We often shop our archive in the studio (Inner Circle members got a sneak-peak tour last month!), but we are always on the hunt for spooky and fantastic accessories.

For this gothic Lana Dress, we sourced some beautiful black brocades, black Radiance lining fabric, and stiff tulle for lining the bust petals. We also had a blast shopping for dark and dramatic accessories (see [page 6](#) for fabric and links).

The original Lana Dress with an inner bra and outer petal.



Our first attempt at the outer petal is too loose and not dramatic enough.



Pinning out the right (as worn) petal for more drama.



Pinning out the right petal for fit. See hacked pattern pieces below.

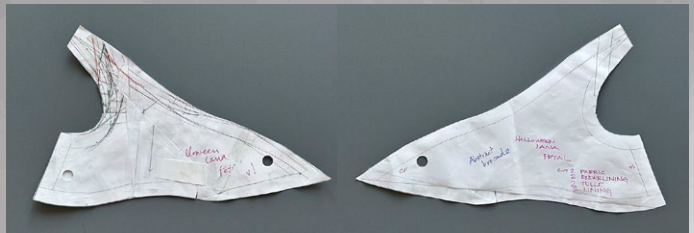


STEP 4

Hack Your Pattern (If Needed)

This is where your creativity gets to shine! There's no right or wrong way to hack a pattern, and it often involves lots of trial-and-error. For the Lana Dress, we created a winged petal by designing on paper and then testing through multiple muslins to get exactly the right shape. We also created a high-low skirt with a 6-inch contrast fabric band along the hem, which involved sketching out a huge design using rolls of paper on the studio floor!

Pattern drafting can feel intimidating, but it's really just play! Plan to use lots of muslin, and reach out to the [Charm community on Discord](#) for help when you get stuck.



Hacking only one pattern piece can create a whole new look!

STEP 5

Sew Your Fantasy

This step is less “follow the instructions” than it is “follow your creativity” and “solve problems on the fly.” For our Lana Dress, we omitted the inner bra, which required us to completely alter the lining construction of the bodice (and find an attractive merry widow to wear for modesty and support). The dramatic winged petal needed extra boning and firm tulle lining for structure. And we learned that high-low hems can drop in significant and unexpected ways, which means this dress will always be stored horizontally and never on a hanger!

Most costumes only get worn once or twice, so don't be too worried about your mistakes. Creating fantasy looks like this is a great way to improve your pattern drafting and sewing skills, plus you get to play dress up! What could be better?



More ideas for Halloween Hacks



Harlequin

(Skipper Bodysuit + Waspie Corset
Belt + Harlequin Neck Ruffle
+ Witch Hat hack)



Dorothy

from *Wizard of Oz*
(Patsy Blouse + Charm Circle
Skirt + Stanwyck Bib)



Janet

from *The Good Place*
(Patsy Blouse + Janet Jabot + Lady Dandy
Waistcoat + Charm Circle Skirt)



Wicked Witch Pinup

(Frenchy Peignoir Set
+ Waspie Corset Belt + Witch Hat)



Rockford Peaches

Baseball Uniform
(Presley Shirt hack + Lamour 3/4 circle skirt)



Morticia Addams

(Morticia Gown, a Bryant Gown
Expansion pattern)



Sally

from *Haunted Mansion*
(Pink blouse + Waspie Corset Belt
+ handpainted Charm Circle Skirt)



Elvira

(Hack for the Morticia Gown,
a Bryant Gown expansion pattern)



Bride of Frankenstein

(Hack for the Morticia Gown,
a Bryant Gown expansion pattern)

CHARM

SHOWCASE

YOUR TAKE
ON A

Charm

HALLOWEEN

Want to be featured in a future issue of *Vintage by Gertie*?

Please visit CharmPatterns.com/contributor to submit your photos.



1



2



3



4



5



6
9



7 8
10 11



1: Jennifer Rzasa, Sewing Circle patron, Mushroom Girl Brooklyn Jacket. **2:** Michael Wiese/ Amanda Bang, Princess Circle patron, Snake Embroidered Mesh Night and Day Dress over a Green Lamour-Starburst Dress. **3:** Brandy Grossi, Princess Circle patron, Haunted Mansion Lamour-Starburst Dress. **4:** Molly Kerrigan, Glamour Circle patron, Star Wars Presley Shirt modeled by Mark Pariani. **5:** Melissa Paris, Inner Circle patron, Beetlejuice Scout Dress. **6:** Jacky Thone, Glamour Circle patron, Belle Night and Day Dress. **7:** Toni Keith, Glamour Circle patron, Spiderweb Gardner Top. **8:** Amy Hamilton, Glamour Circle patron, Captain America Landis-Starburst Dress. **9:** Juju Steed, Inner Circle patron, Batwing Lamour-Starburst Dress. **10:** Honor Neve, Princess Circle patron, Witchy Stanwyck Dress. **11:** Anna Hehl-Bisson, Glamour Circle patron, Indiana Jones Liz Dress.

ALL ABOUT KNITS

There are so many reasons to love knits! Knit garments are easier to fit, quicker to sew, and more comfortable to wear than many woven outfits. They can be cool in summer and warm in winter, and they're the perfect option for when your body shape or weight is changing.

If you're not familiar with knits, they can be intimidating, especially when you're shopping online. Here are a few things to remember.

KNITS STRETCH (USUALLY)

Knits are sewn on a loom with interlocking loops, giving the material natural (mechanical) stretch. Sometimes Spandex/Lycra is included in the fabric content, giving the fabric even more stretch ability.

Stable knits are knits with less than 25% stretch and are great for structured shirts, jackets, dresses, and skirts. Some common stable knits are scuba, double-knit ponte, and some sweatshirt fabrics.

Moderate stretch knits with 25–50% stretch, like interlock and jersey, are great for stretchy t-shirts and dresses. Even stretchier knits (up to 75% stretch), like some jersey, stretch velvet, and stretch terry, also work with shirts and dresses.

Continued, page 40



IT'S NO SECRET THAT WE LOVE
DESIGNING, SEWING, AND WEARING
KNIT PATTERNS AT CHARM!



The stretchiest knits, with 75–100% stretch, are usually reserved for swimsuits, athletic wear, leotards and bodysuits, and other body-hugging garments.

To calculate stretch percentage, pull 4 inches (10.2 cm) of fabric taught along the lengthwise or crosswise grain as far as comfortably possible and measure. The stretch percentage is calculated by dividing the amount the fabric stretched by the amount you started with. If it stretches to 6 inches (15.2 cm), it has 50% stretch.

FABRIC CONTENT, WEIGHT, AND DRAPE

Knits made with bamboo or rayon will be drapery, just like their woven counterparts. Knits can also be made from cotton, wool, or other natural fibers, as well as nylon, polyester, and other manmade fibers.

Single knits, like jersey, look different on each side and the edges tend to curl when cut. They are drapery and casual, and are often used for t-shirts. Double knits, like interlock or ponte, look the same on each side and are more stable. They have more body and are great for skirts, dresses, jackets, and pants.

Grams per square meter (GSM) is the standard unit used to measure fabric weight. This is an important number to pay attention to when ordering knit fabric online (and wovens, too!). For knits, 100–150 GSM will be lightweight, 150–200 medium-weight, and 200–400 heavyweight.

DIRECTION OF GREATEST STRETCH

Knits usually stretch more in one direction than the other. Knits that only stretch in one direction are called two-way stretch knits (confusing, I know!). Two-way stretch knits usually stretch along the crossgrain of the fabric, and you want this stretch to go around your body. Knits that stretch in both directions are called four-way stretch knits, and are best for swimwear and leotards that need to stretch across your body as well as up and down your torso.

OUR FAVORITE DESIGNS IN KNIT FABRIC

Stable Knits (10–25% stretch)

- [Hepburn Top](#)
- [Gardner Top](#)
- [Turner Cardigan](#)


Moderate Stretch Knits (25–50% stretch)

- [Joan Wiggle Dress](#)
- [Audrey Cigarette Pants](#)
- [Midge Breton Top](#)

Stretch Knits (50–75% stretch)

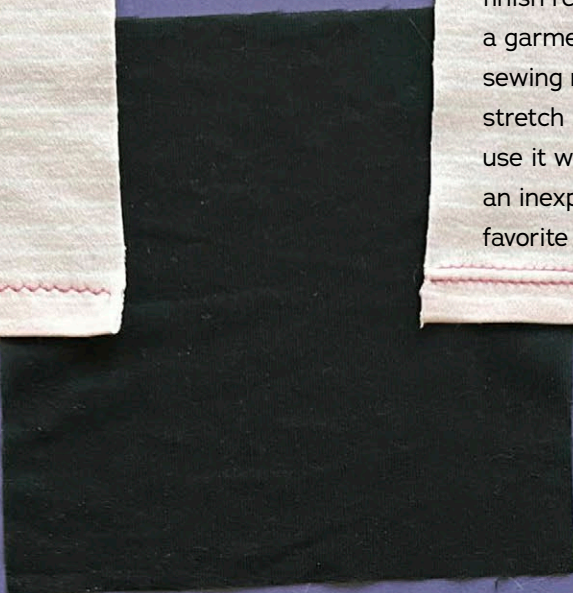
- [Barbie Top](#)
- [Skipper Dress and Bodysuit](#)
- [Jasmin Jumpsuit](#)
- [Jeanne Gloves](#)
- [Society Dress](#)
- [Claudette Skirt](#)
- [Sophia Dress](#)





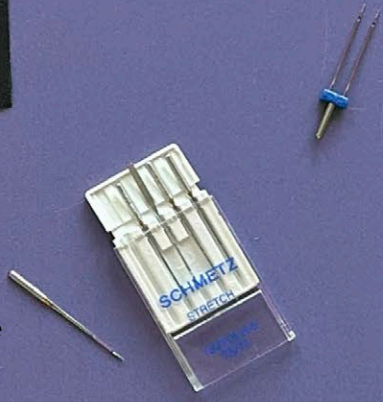
Sew hems using a twin needle, blind hem stitch, or very narrow zigzag stitch.

Wide zigzag stitches are rarely used to finish ready-to-wear hems, so they make a garment look handmade. A twin stretch sewing machine needle combines two stretch needles onto one shank and you use it with two spools of thread. It's such an inexpensive tool and it's one of my favorite ways to finish knit hems!




Sew seams using a small zigzag stitch, so the seam will stretch as the fabric does.

Use a zigzag stitch that is about 0.5–1.0 mm in length and 2.5 mm in width. Test your stitches on your fabric, then stretch the seam. If any stitches break, you'll want to increase the stitch width. If you have tunneling along the seam (where the fabric bunches inside the zigzag stitches), try narrowing the stitch width or using a lightning stitch.



A stretch sewing machine needle has a blunt tip, which helps it to slide in between the loops of your knit fabric. If you get skipped stitches, it's likely because you are using the wrong needle for your fabric!



Despite what you might have heard, **you don't need a serger to sew knits!**

You can get a professional-looking finish with just a few special tricks and tools.

Emmy

ENCHANTED

BY JEANETTE
DOHERTY

Glamour Circle patron Emmy Church isn't afraid to shine. Whether she's at the theme parks flaunting one of her many Halloween creations or at home painting a giant mermaid mural, she delights in making herself and the world around her loud, colorful, and truly unique.

Why do you sew?

As a child I was marked as failure to thrive. I wasn't gaining weight so clothes never fit. Sewing was a necessity. Over time, it's become ecological as well. I'm a zero waste seamstress, and I make garments that I'll keep for a long time, not toss into a landfill after one season. I've also got a pretty loud personality, and I'm proud that I can make my clothing just as loud.

What's your Charm Story?

Every year my local sewing group, the [D3 Darlins](#), completes a summer sewing challenge, and one summer we did Gertie's 6453 sew-along. But it was the January 2022 release of the Joan Wiggle Dress that inspired me to become a Patreon member. That design clenched it for me. Now it has become my journey to sew through all of Gertie's patterns. I'm 56% of the way through!

What's your favorite Charm pattern?

I love the close-fitting silhouette of the Bryant Gown. Plus, with the Morticia expansion, you can make it with either woven or knit fabric!

What do you love to do when you're not sewing?

I really enjoy painting. This year, I plan to do a

mural-sized stained glass painting of the mermaid scene from "Harry Potter and the Goblet of Fire" across my fence. And I teach acrylic painting on Twitch. I'm also a gamer girl and play cozy little games like Disney's Dreamlight Valley. I spend a lot of time connected. When I disconnect, I want an absolute break, so I also do a lot of hiking, getting lost in nature.

You've made a lot of fun garments for Halloween. Why Halloween?

Well, I am a Halloween bride. I had a drive-by notary wedding on Halloween 2020 while the world was on fire. Then we had a Hallowedding Ever After party on our first anniversary. I love Halloween as a day when everyone can take chances with a look, personality, or hidden aspect of themselves without feeling judged. They can feel as free about themselves as I feel everyday.

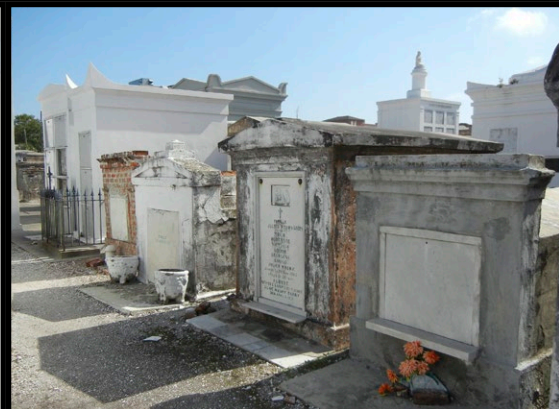
Follow Emmy Church on:

Instagram [@curiousdarlin](#)

Twitch [Twitch.tv/emmyofallcrafts](https://www.twitch.tv/emmyofallcrafts)

AT RIGHT — 1: Spiderweb flamenco-style Bryant Gown with Morticia Sleeves. **2:** Rose Dressing Gown as a Slytherin Hogwarts robe with Wicked Witch Hat. **3:** Halloween Lana Dress with batwing petals. **4:** Sleeveless Frenchie Nightie. **5:** Morticia Hack of the Bryant Gown. **6:** Beetlejuice Jane Set pants with Skipper Top, Peter Pan Bolero, Hattie Tote, and Wicked Witch Hat. **7:** Felt Charm Circle Skirt with Zero appliqué with velvet Gardner Top. **8:** Jane Set pants with Jasmine-Skipper swimsuit with a Presley Top.





MEET THE TEAM

Meet Charm's Managing Editor

away, so please tag me if you think there's a mistake!) When a pattern is released, I



am SO sick of looking at it that I never want to see it ever again, but once I read all the lovely comments on release day, my love for the pattern is reignited.

If I had to choose just three, they would be the Betty Dress (I wore it for my wedding photos in front of the Eiffel Tower), the Barbara-Wanda Dress with the upcoming pocket hack (it's my daily uniform in the summer), and whatever project we're currently working on right now (because I love the process of seeing a design brought into the world).

What tools can't you live without?

For writing and proofing patterns, I adore my dual-monitor setup (once you've tried it, it's hard to go back!), but most of the time, I prefer analog tools. I'm obsessed with [J. Herbin's shimmering gold-and-gray fountain pen ink](#), paired with an italic nib, and my [Stalogy Japanese notebooks](#).

For sewing, I use [this hell-a-sharp seam ripper](#) that's more like a surgeon's scalpel (be careful!), and [these pink duckbill applique scissors](#) for grading seams. And since I do so much lingerie sewing, I buy the fabric and notions in bulk and dye them using [Dharma Trading's acid dyes](#) in my never-used-for-food slow cooker. Space is at a premium, so this adorable [octopus drying rack from IKEA](#) is always hanging around.

HELLO! MY NAME IS

Angie

Angie Green is Charm's secret weapon behind the scenes, making sure every project is done on time and to the highest quality possible. She spends part of her time writing, editing, and proofing the sewing patterns, instructions, and this magazine, and the rest of her job involves playing project manager so everyone on the team knows what to be doing when.

With a varied resume that includes professional salvage operator, nonprofit executive director, cemetery restoration expert, non-woo tarot instructor, and cozy mystery writer, nothing (and everything!) has prepared her for working at Charm.

"I've been a Charm uber-fan since *Gertie's New Blog for Better Sewing* days. It's incredibly inspiring to be part of a team of ambitious, creative, and professional women who are all working in their areas of strength. Every pattern or project has at least 115 individual steps, and we're usually working on a dozen projects at a time. I love that I get to use my puzzle-solving, chaos-organizing, and detail-obsessing skills in a way that helps this team bring their creative visions to life.

"My husband and I are nomadic, traveling to a new location every three months with our two cats, Monster and Lira. Sewing space is extremely limited, so I focus on small projects like bras and lingerie. My personal fashion style is boring and basic on the outside, but my smalls have gotten very fancy!"

What are your three favorite Charm patterns?

This is an impossible question to answer! Part of my job is proofing the patterns and instructions; I check every notch, every size, and every word multiple times. (And if I missed anything, I want to hear about it right



DeAnn
Jae
Goodneighbor
Veronica Mickelsen
Nielsen
Cookie Marroquin
Tori Park
Dawn M. Arnold
Kathryn Kunchick
Jessica Long
Amy K. Masreliez
Vegan Fines
Kate Jenkins
Faith Phife
Larry Ungar
Catriona Karch
Lynda Duarte
Courtney Lewis
Jenna Mackenzie
Noortje
Colleen Elliott
An-Sofie Alderweireldt
Devin Devonne
Susan
Sarah Bakewell
Jacqueline Gregory
CW
Romelle Lowry
Elodie Clermontel
Louise Higgins
McAbee Nichole Rose
Liz Mulhearn
Hannah Petree
Elisa Atwood
Shannon Berlin
Anna
Lauren Anguiano
Molly Walz
Carrie Dunlap
Anno Domino
TheGr8t Katsby
Gurgi 666
Suzanne Young
Emily Matscherz-Hack
Blanchet Orane
Charlene Fouche
Mia Beechey
Nicole
Chels Lynne
Teila
Hazel Stansbie
Amy Randall
Jessica Hansen
Sarah B Stover
Lynette Parsons
Tammy Kjos
Nancy Millione
Robin Combs
Deanna Elizabeth
Wetmore
Blue Box Stitchee
Kayla Pascoe
Sophie Daniel-Rocton
Julia Turos
Vivian
Yvonne Ware
Rose Charlotte
Sanders
Artviolet7
Raicheton Le
Elizabeth Bell
Heather
Elisa Reid
Cynthia Faut
Crystal Kostic
Stephanie Medeiros
Emily Skinner
Jae Rivera
Dana Dagg
Jessica Tigner
Kim Lindsey-Perrien
Janet Maffy
Topsy Turvy
Wonderland
Rebecca L Worley
Trisha Rockwell
Gloria Jordan
Chris Hoyt
Gráinne Holland
Ashlyn Gordon
Laura Moss
Antonia McIntyre
Moria Trent
HeathenDev

Sara Chitwood
Kayla M Kueneman
Nadia Taylor
Jaime
Remmy M
Jennie Youssef
Marisa Kaupert
Ktimene
Evangelina Garcia
Jennifer Wagner
Charlotte C
Hannah Woods
Michio
Jennifer Hartpence
Leticia Ayala
Stacey H
Jennifer Rinekso
Kelsey Meyer
Jomi Emerson
Alicia E Cardona
Thirteenth Galloxy
Desiree Latimer
Kimber Norquest
Faith Reid
Stacy DiBiao
Leah Franklin
Kelly B Mann
Monica Sinkler
Dorothy Dickerson
Cristy Zamora
Breanne Davis
Alli Robbins
Kat Perez-Rinkes
Deborah
Jasmine Wallace
Brooke N
Gladys Paniagua
Concetta
Emma Warren
Angela
Blaze - The Red Rose of Texas
Cyndee Perez
CaleanWsh
Arminida Diaz
Teecee Leon
Matilda Merx
Alexandria
Margarette
Wheelerwright
ElianaSews
Arienne333
Jamie Trujillo
Anna Bancroft
Kromatone Cosplay
Iris Evans
Lisa Deveux
Zoe Adams
Claudine Young
Catherine Rider
Crystal Barker
Kathleen Dawson
Liz Kinnaman
Cherie Collins
Aldina Rotondaro
Sidonie Jones
Lisa-Maria
Vintage Feels and
Automobiles
Trice
Shaunte D Kisbey
Enya Flint
Laura Arellano
Emilie Cossuth
Tamara Brzuziowski
Nadean Spedding
Just Deborah
Lachaize
Amanda Klein
House of Roark
Ms. Lane
Lisa Hernandez
Nanette McDonald
Marion
Shane Willis
Jeanette Ramirez
Harriet Pflug
Nikki
Antonia Kilby
Kathryn
Olivia Hinden
Clovepod
Malin Klarström
Sara Pierce Giese

Amy
Mandy Jimenez
Laura Kerssemakers
Rosemary Fraser
Diana Orozco
Treena Hewson
Donna Plante
Jennifer Lawrence
Sierra Modro
Valhalla Thundermuffin
Jen Iverson
Rachelle Moreno
Jenni Stackpole
Meredith
Amanda Browning
Karen
Carrole Johnson
Katherine Brunskill
Terri Frazier
VintageTink
Alicia Nightingale
Miss Mac
Ella Craft
Cecilia Huerta
C H
Windy A deCastro
Theresa Wickham
Tina Patton
Keri Whitaker
Alejandra Briseno
Carmen
Julie Pieri
Katelin rhan
Ludivine Perier
Gina L
Valerie Howell
Peyton Wheeler
Nancy Burns
Abigail Piazza
Brandy M
Angela Sapienza
Edwards
Lori Day
Cherry Larkins
Micaela Johnson
Elin Söderlund
Pauline Leong
Linda Wenzelburger
SueAnne Griffith
Rosie Green
Cassandra Picchi
Janeen
Deemazee
Melissa W.
Zaria Belle
Bethani Gladd
Kiitana Ross
Monica
Alisha LeBlanc
Alex Michelle
Giselle Camp
Jill Ishii
Liesbeth Kerckhofs
Holly Frey
Tamara Wolf
Jacinta Williams
Cheryl Griffin
Angelic M
Rowan Cota
Lou
Joycelyn Renee Holland
Catherine Dirks
Kimberly Ae
Jaime Askvig19
Julia Bielefeld
Catherine Kajewski
Alisa
Ruth
Charlotte Peeters
Melissa Avery

Nadina Brockhurst
Quesheba Hayes
Adrienne Mazil
Erin Bockelman
Jen Flores
Debra Faber
Michelle Crocker
Sarah E Hannum
Heather Griffin
Lila Buza
Karrie Tolin
Jamie Wegforth
Katherine Heath
Birgit
Taryn Jeffries
Katrina Kinney
Karen Mitchell
Heather Mousie
Angie Caddy
Charlene Morris
Catie Petersen
Monica Vidal
Heather Sarbo
Jessica Dunne
Heidi Thaw
Liana
Mary Pierce
Sarah R Herd
Susan Transue
Annabel Vickers
Jessica Coco
Tanya
An Stukken
Beate Adriana
Meghan Hallam
Charlene Ingram
Patricia Colquhoun
Maria Ornelas
Phoenix S. Fernandez
Betsy
Liliana Rodríguez
Helen Crawford
Ruth Unrau
Angie Pham
Whitney Christine
Megan Nance
Sasha Walsh
Natalie Anne
Rebecca Van de Pol
Annette Marchant
Summer Sapphires
Debra Boulton
Carroll
Wilma Gerlisma
Noell Holmberg
Cathy Houghton
Emily Gregory
Cathleen Gutierrez
Emily Taggart
Schricker
Mari Kangur
Aiesha Rimanic
Kitti Curtis
Melissa Brown
Melissa
Cat Cordova
Bianca kesting
Ione Walker
NurseAnita
Kori Kontz
Stephanie Carrier
ALB
Samantha Barker
Inés Casado
Emma Hood
Elizabeth Covak
Claudia Amrein
Sue Chalk
Jackee Rumford
Nekesa Afia

Yolanda R Aramori-
Hohenshell
Erikka Gallas
Sherry Durst
Kim Johnson
Marita Borgen
Amanda Freese
Meleina
Claire Temperley
MJ Willard
Jae Pfeffer
Melissa Perron
Valérie
Tabitha Becker
Elaine McGinty
LP
Charmion Phillips
Hillary Ann Dalton
Rebekah Petersen
Emily Sickenger
Sierra Baker
Jessica Caraveo
Melissa Dirmeyer
Gaby A
Rhonda Ryall
Elizebeth Coldwell
Ellie Clarke
Diana Miller
Carmen Bouldin
Pauline Stacchini
Katie
Alondra Olvera
Amber Maple
Chelsey Fields
Emily Hinderliter
Jessica Reeves
Terri Croft
Janna Sedgwick
Emma Schwalbe
Rebecca Ecklund
Amanda Bronson
Kathy Biondi
Melissa Carlson
Simone Schlemmer
Eva Angibaud
Jennifer Belanger
Tia Miller
Heather B.
Zahidah West
Mimi
Ashley Pierce
Cecile
Michele Wesolowski
John
Rebecca Arias
Amy Cutting
Teresa M McCranie
Cyndi Maloy
Linda Cobarrubias
Keysha_Kurves
Pia Karlson
Kittie Sims
Natalie Coulter
Jenna-rae Isaman
Amanda Moczygomba
Tatiana
Tiffany Griffin
Yasmin Poveda
Hiployta
Emily Lowe
Laura Zeman
Pidge DePeché
Jamie Ulm
Selene Bainum
Poppy
Abigail evans
Jaimarie Gold
Jody Nelson
Alicia
Kimberly Lassiter

Debi Fry
Anastassia Vales
Maria Rios
Dianna Hummel
Colleen Marie Evans
Lily Galindo
The Life and Times of
a Texas Mom
Judith Gatton
Rebecca Walker
Mh Swen
Maxine Chivers
Jacq of all Trades
Jenn Combs
Erin Field
Katherine Casey
Rita Adler-Everett
Lynda Beaulieu
Kendra Faye Weiss
Jessica Harmsworth
Lisette Briggs
Randi Sund
Elizabeth S Pike
Claire Temperley
Alicia Dayton
Misti Smith
Shannon Horton
Sarah Morris
Caroline
Angela
Misty Benson
Clara Button
Michelle Chiang
Autumn Langemeier
Jaala Joyel
Stacy Marie
Lucy's Vintage
Compendium
Magy
Allison Ligorano
Meg White
Jennifer Andberg
Melissa Jellyman
W J H
Brittany Outlaw
Gabriel Ramirez
Corazon Rizal
Judy Oler
Jessica King-Hart
Rani Self
Rebecca Rowan
JellieJam
Sarah Johnson
Meguin
Willow Hunter
Jaime Collick
Mandy Fish
Louise Lieschke
Cassie Sullivan
Jolie White
Tuva Thorsen
Malina Phillips
Mari Peterson
Sheena Proffitt-Taber
Stephanie Lynn
Petra Daemen
Jenni Taylor
Chelsea Thomas
Cheryl Belles
Crystal Firenze
Jana Al Awad
Lynda Roth
Deidra Johnson
Becky B.
Janice
A Vintage Vanity
Mona Murphy
Maegan Riley
Christina Miller
Deanna Murray
Nicola Hickey
Helene Amalie Meyer
Amalia Tianca Simon
Laurie Roberts
Stephanie Spong
Marina Thompson
Elena Miranda
Heather Seth
Haleigh Bugg
Katy Ferris
Carol Waking
Emily
Stephanie Dumbrell
Einat Gur Rubin
Rowena Wong

Shannon
Hayley Davis
Monica Gerard
Sibyl Scott
Rebecca Cook
Stephanie
Victoria
Kathy Bacchus
Corrine Gibson
Danielle Cutler
Stephanie Kernyansky
V. Elizabeth
Rebecca Ashley
Jennifer Kaiser
Diana Gasper
Gail Ann Thompson
Joanne Van Vranken
Kimberly Daniels
Megan Williams
Tricia Wilkerson
Shannon Gruber
Burchard
Trenell
MJ
Mallory
Elizabeth Delaney
Sara Dickson
Laura Blair
Charmen Adams
Phoenix Searight
Sarah Hamilton
Darla Kendrick
Melissa Sanchez
Christi Hayes
Heather Ablandi
Sandy Harrison
Michele Hays
Kacie Kersey
Juju Steed
Erin Getty
Tara Shaffer
Kaye Luck
Cindy
Jessie Corpening
Rachel
Randi Jensen
Vanessa Cabral
Rose Does...
Anna Vollmer
Nelida Gamala
Mary Ann Quintana
Jennifer Bird
Rose Witkowski
Jenna Tomlinson
Caroline Ficara
Jocelyn Carlson Kelton
Reagan Foy
Sarah Morris
Mary Bart
Scientist Sue
Megan
Alexandra Lee
Mina Hernandez
Sydney Norwood
Mona Squeels
Alexis Kumasaka
Megan McGowan
Sarah Dawley
Ruthann Jagge
ThreadbareBetty
Stacey Stitch
Charlisa Belle
Kelly McGurk
Gina Menge
Julie Craig
Ally Oops
TheJenniGirl
Jennifer Dougherty
Red Queen
Lola Barnett
Janelle
Bethany Hughes-Diemi
Susan Ross
Catie Brown
Maren Marshall
Aerielle L Roberson
Rachel Jensen
Sunny Berg
Renee DeBolt
Anna Mae Alexander
Melissa Mercer
Dawn DeVoe
Lily H

as of September 1

AN INTERVIEW WITH
Elwira

Greetings fans!

I'm Elwira but Team Charm calls me...
beautiful girl and Meowstress of the Dark.

When I'm not busy protecting the studio, I like to spend
my time servicing as a pattern weight and socializing with the team.

I also love... getting combed every morning to keep my black coat
glossy and gorgeous.

Being a Charm mascot is... important work. Every sewing studio
needs a resident glamour kitty.

I remember when... I came to live in the Charm studio. I came in on
a temp employment basis as an expert mouser, but I knew right away
that I belonged here forever. I mean, look how fabulous I look on the
peacock chair!

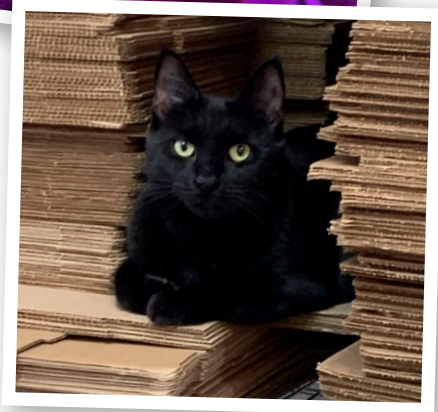
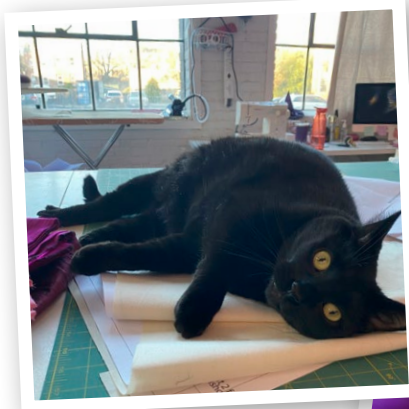
My favorite place to nap is ... on top of whatever fabric is about
to be cut out.

You know I'm a professional because nothing in the Charm
studio escapes my notice. I inspect all new fabric purchases
immediately.

If I was in charge of Charm, I would... order yards and
yards of the most luxurious fabrics just for me to nap on.
Bonus if they are light colored so I can shed beautiful
black fur all over it.

I can't wait for... the Halloween Extravaganza!
The spooky season is my favorite. It's no accident
that I was named after a glamour ghoul!

xoxo, Elwira



FASHION

HISTORY



“CLOTHES MAKE A STATEMENT.
COSTUMES TELL A STORY”

MASON COOLEY

Above, actress and dancer Vera-Ellen in an early 1950s promotional postcard.

PHOTOGRAPHER UNKNOWN