

#10DayBluesChallenge

Day 8 – More Chord Shapes and Scale Shapes

Round 2 in E



Tenthumbspro.com
For educational purposes only

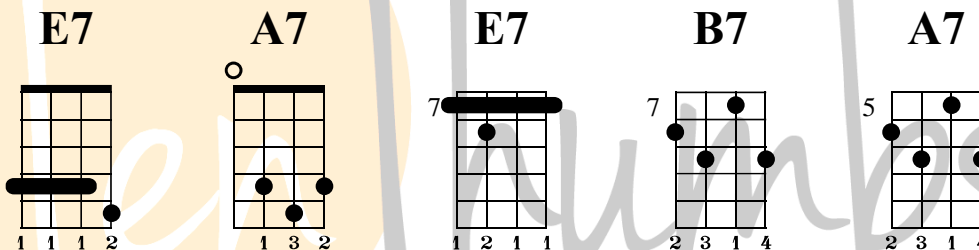
Key: E

Tempo: Any

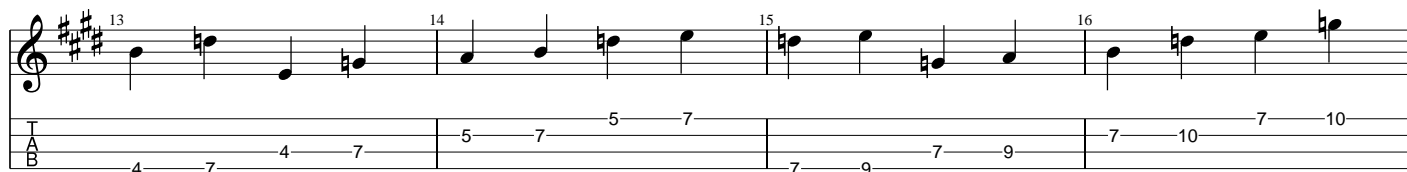
Chords needed: E7, A7, B7

Video Tutorial: <https://www.youtube.com/watch?v=UszR1puYr7I>

Chord Shapes:



These are the new chord shapes that we are going to be using for this 12 bar bar. Now let's take a look at the new scale shapes that we are going to be using.



Now lets apply these ideas to a 12 bar exercise using the scale as 1 bar fill with 1/4 notes.



21 22 23 24 25 26 27 28

4 4 4 4 4 7 7 7 7 7 7 7 10 7 10

5 5 5 5 5 7 7 7 7 7 7 7 7 7 7

4 4 4 4 4 7 7 7 7 7 7 7 7 7 7

0 0 0 0 0 7 9 7 9 8 8 8 8 8 8

9 9 9 9 7 7 7 7 2 2 1 1 0 0 H 3 4 0 2 0 1 2

7 7 7 7 5 5 5 5 4 4 4 4 3 4 0 2 0 1 2

9 9 9 9 7 7 7 7 4 4 4 4 3 4 0 2 0 1 2

8 8 8 8 6 6 6 6 4 4 4 4 3 4 0 2 0 1 2

Take the time to really practice this because we are going to be turning this scale into something much more musical tomorrow as we talk about how to turn the scales into fills.

