

CHARM PATTERNS

STANWYCK BODICE AND COLLAR

Sizes 2-20
with cup sizes A-H

SIZES 2-20 PATTERN SIZE KEY

2	—————
4	- - - - -
6
8	- . - . -
10
12	- . - . -
14
16	- . - . -
18
20	- . - . -

SYMBOL KEY

grainline arrow

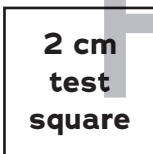
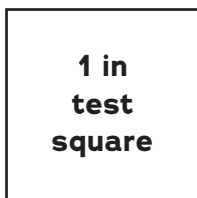


match point/
placement mark



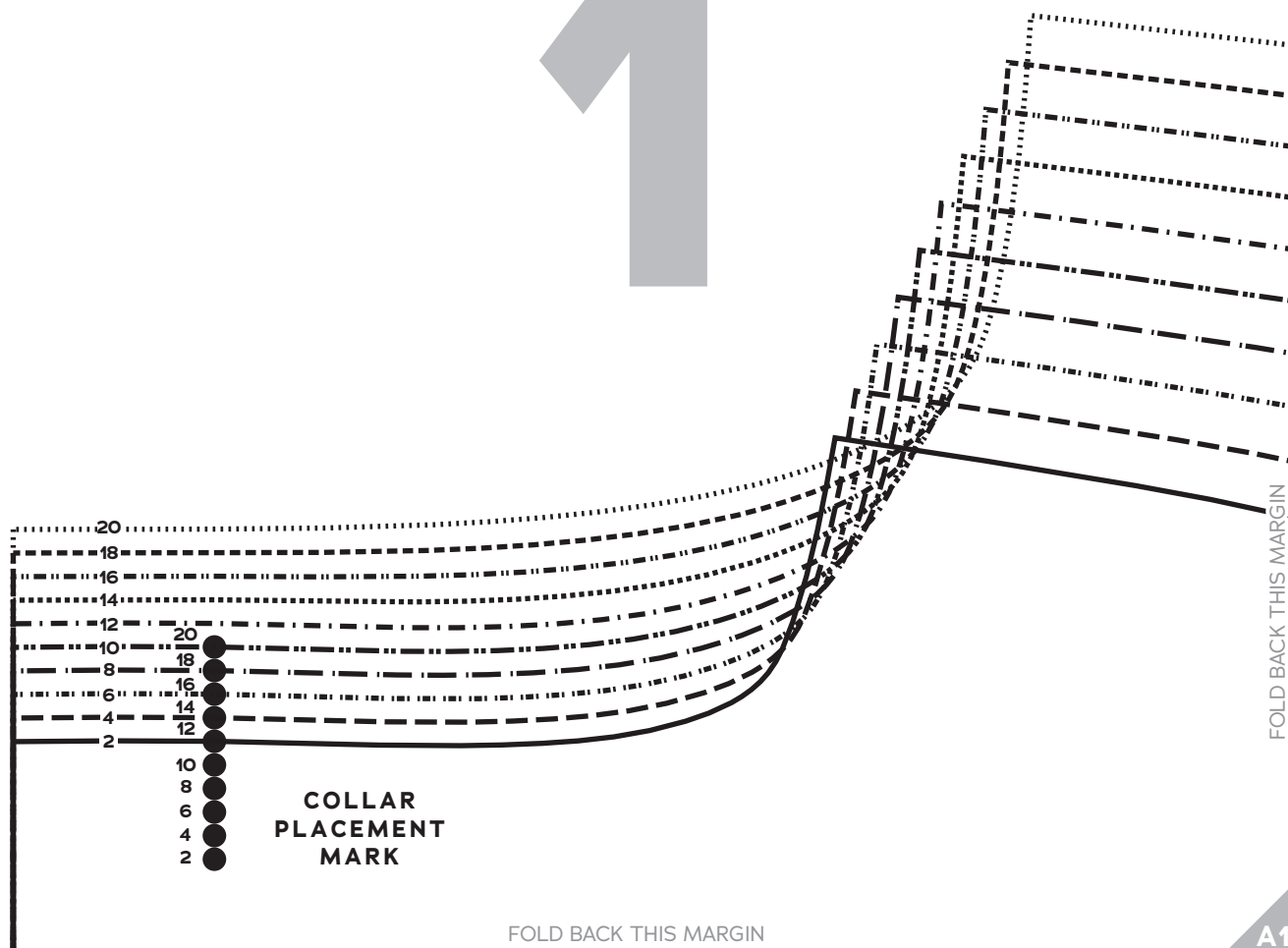
© 2020 Charm Patterns
by Gertie. Distribution
and Commercial Use
Prohibited.

5/8 inch (in) (1.5 cm) seam allowances are included on all pattern pieces.



PAGE

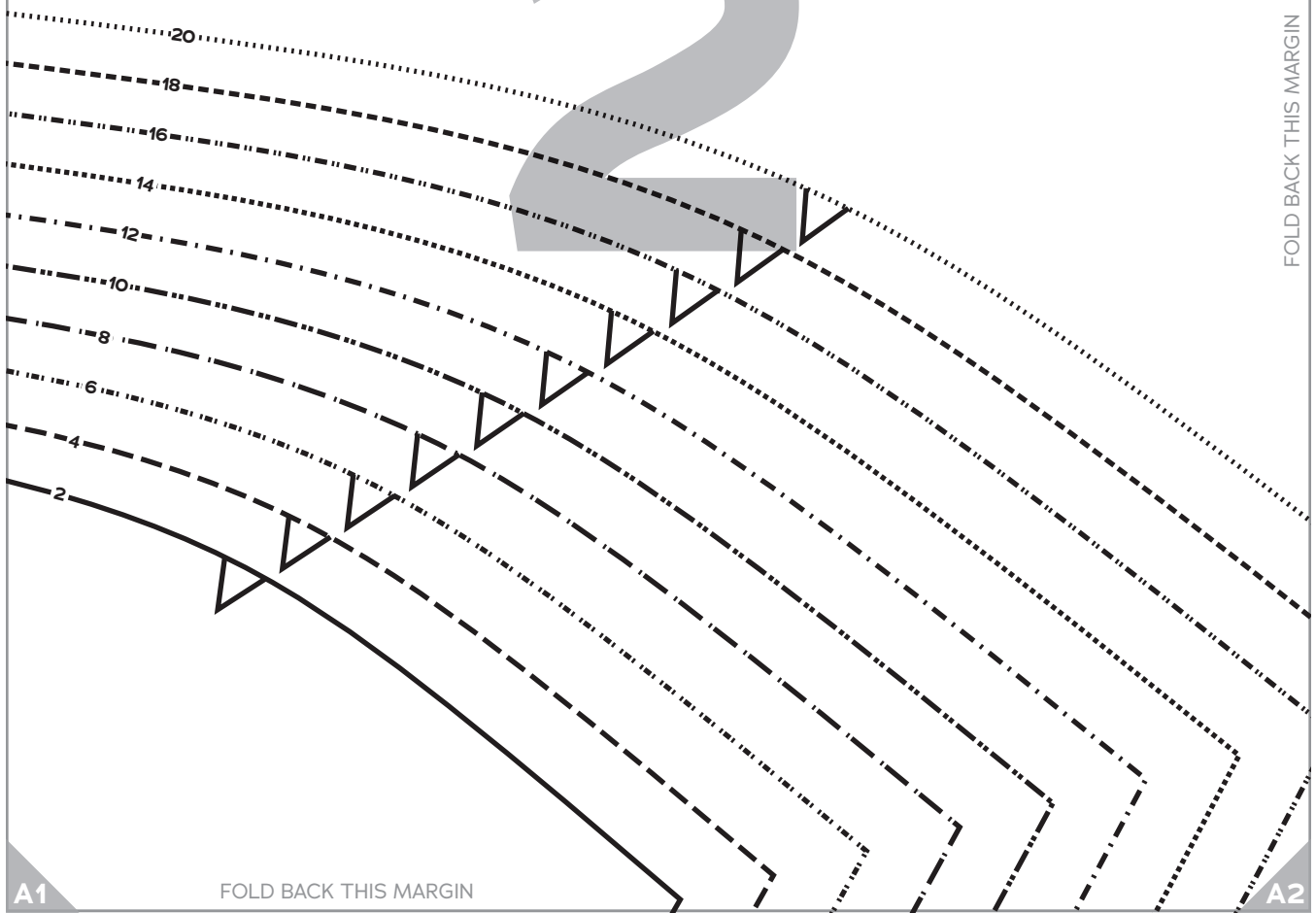
1



PAGE

2

FOLD BACK THIS MARGIN



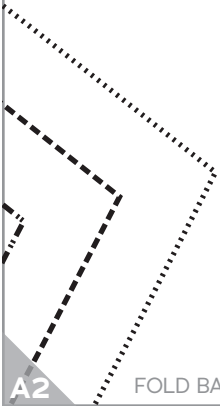
A1

FOLD BACK THIS MARGIN

A2

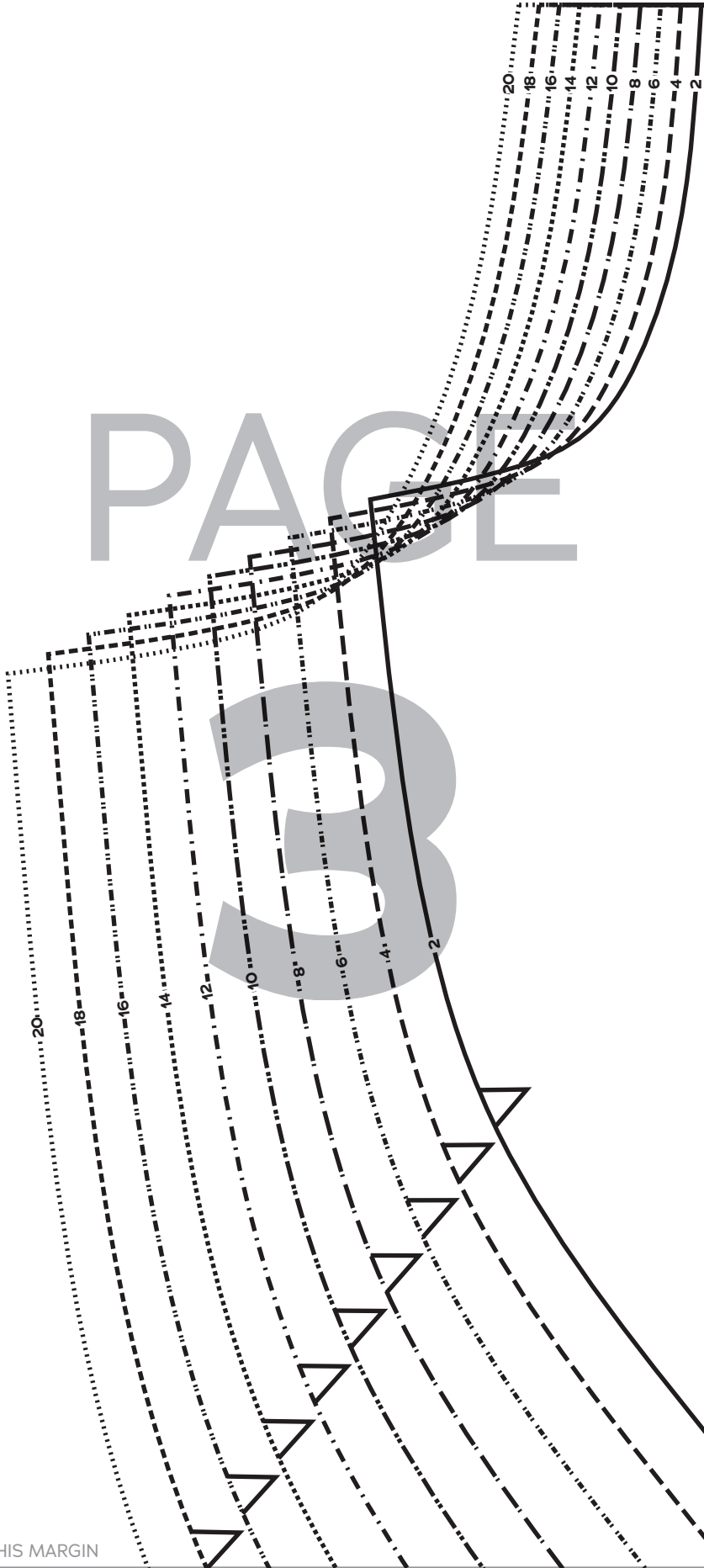
PAGE 3

FOLD BACK THIS MARGIN



A2

FOLD BACK THIS MARGIN



A3

FOLD

PAGE 4

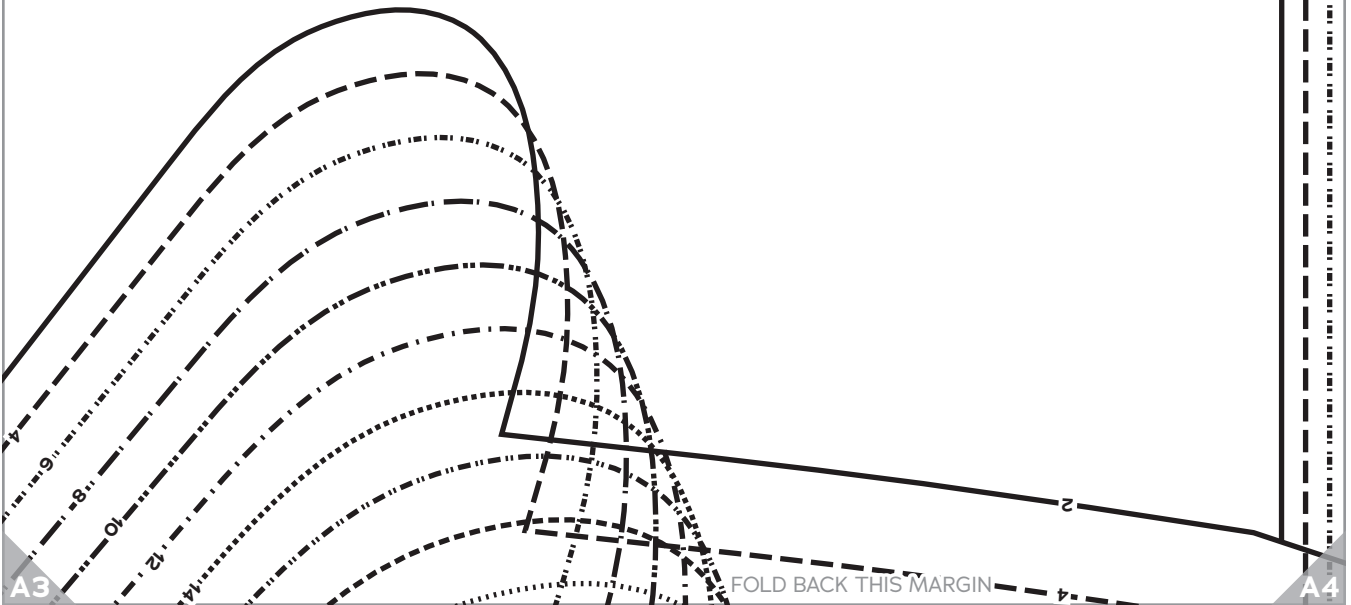
CHARM
PATTERNS
by Gertie

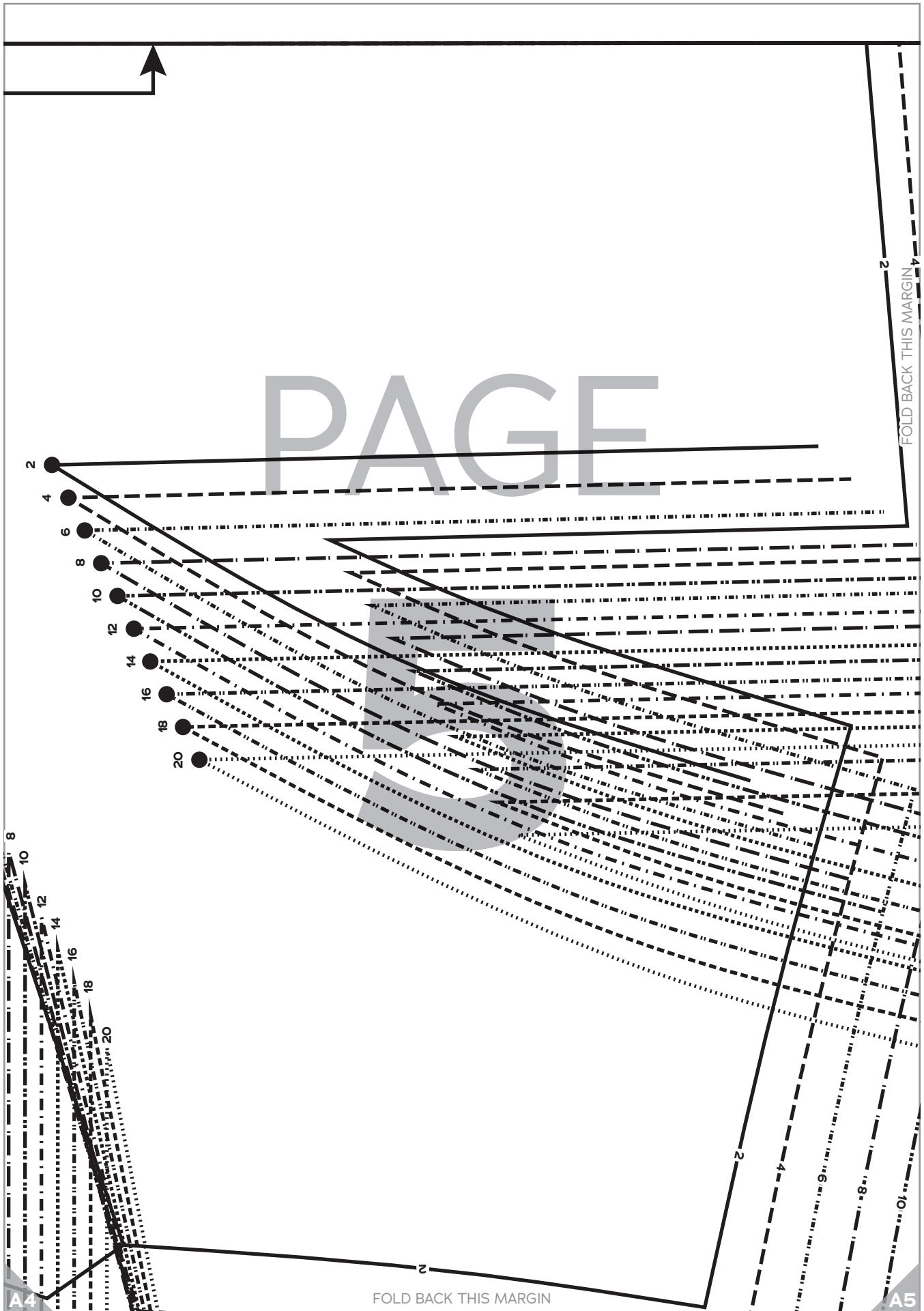
STANWYCK BODICE
AND COLLAR
SIZES 2-20

Bodice Front, A Cup

Cut 1 fabric on fold, 1 lining on fold

FOLD BACK THIS MARGIN

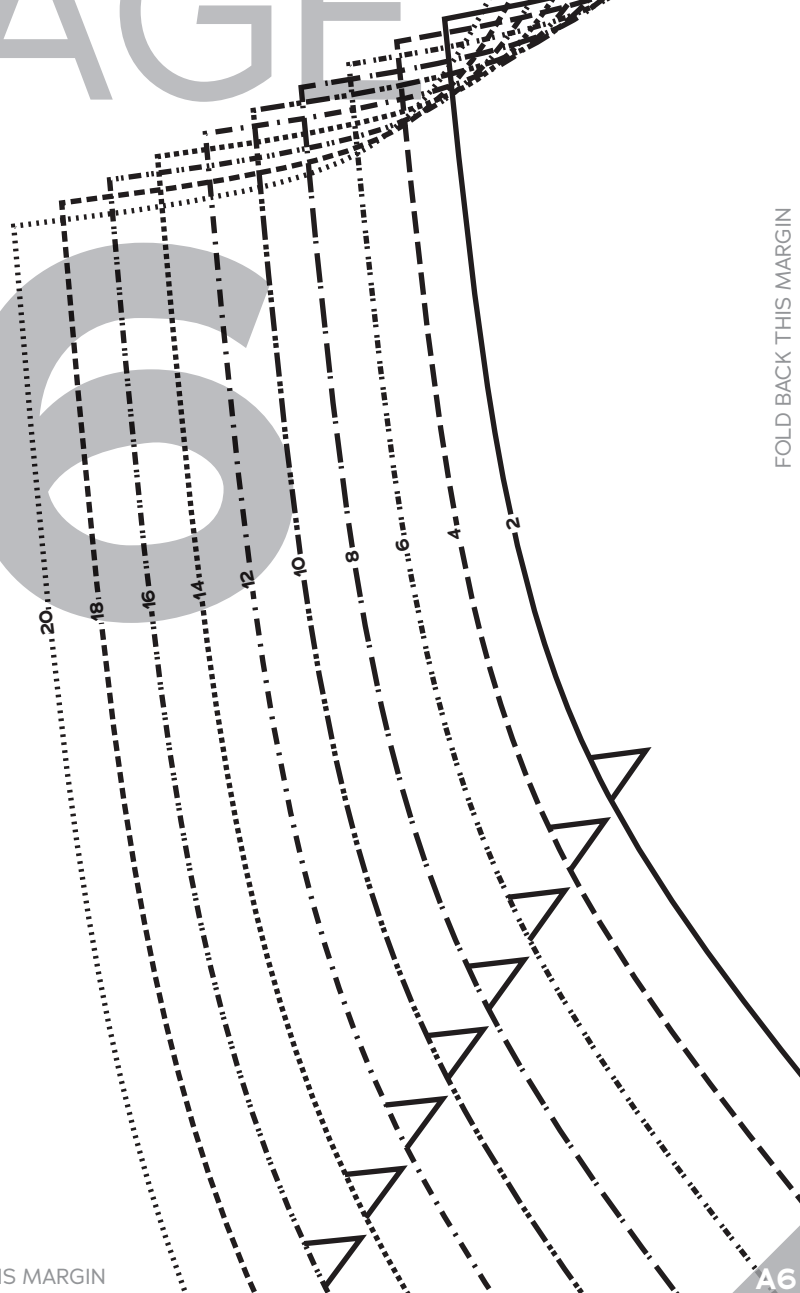
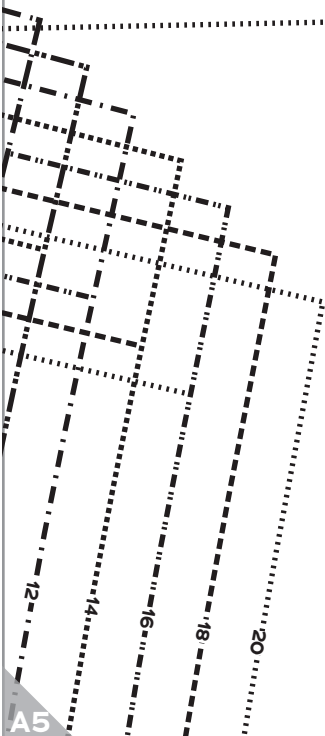
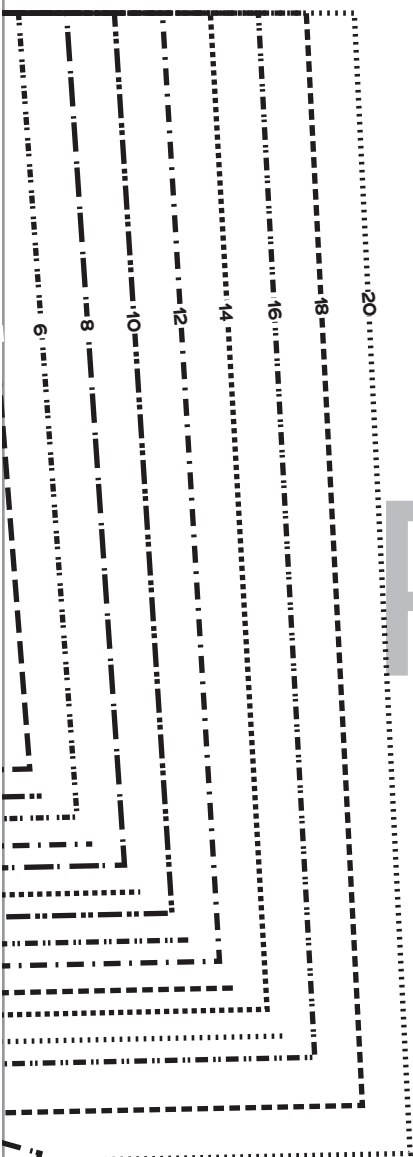




PAGE

6

FOLD BACK THIS MARGIN



A5

FOLD BACK THIS MARGIN

A6

FOLD

PAGE

7

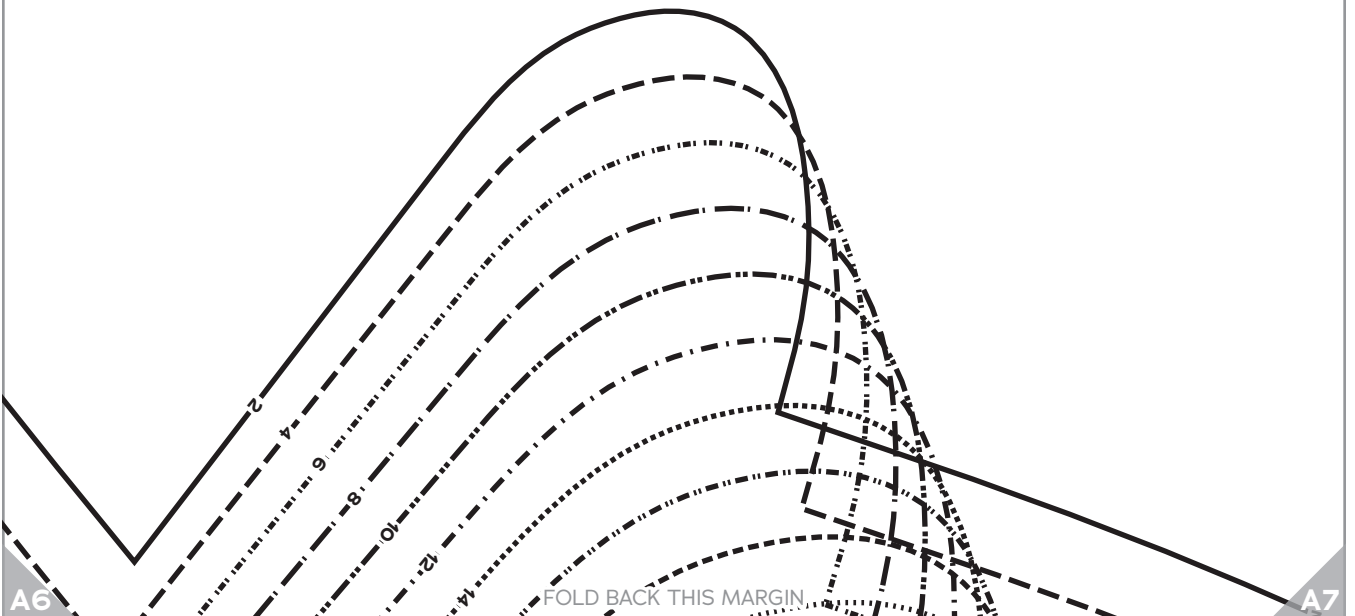
CHARM
PATTERNS

STANWYCK BODICE
AND COLLAR
SIZES 2-20

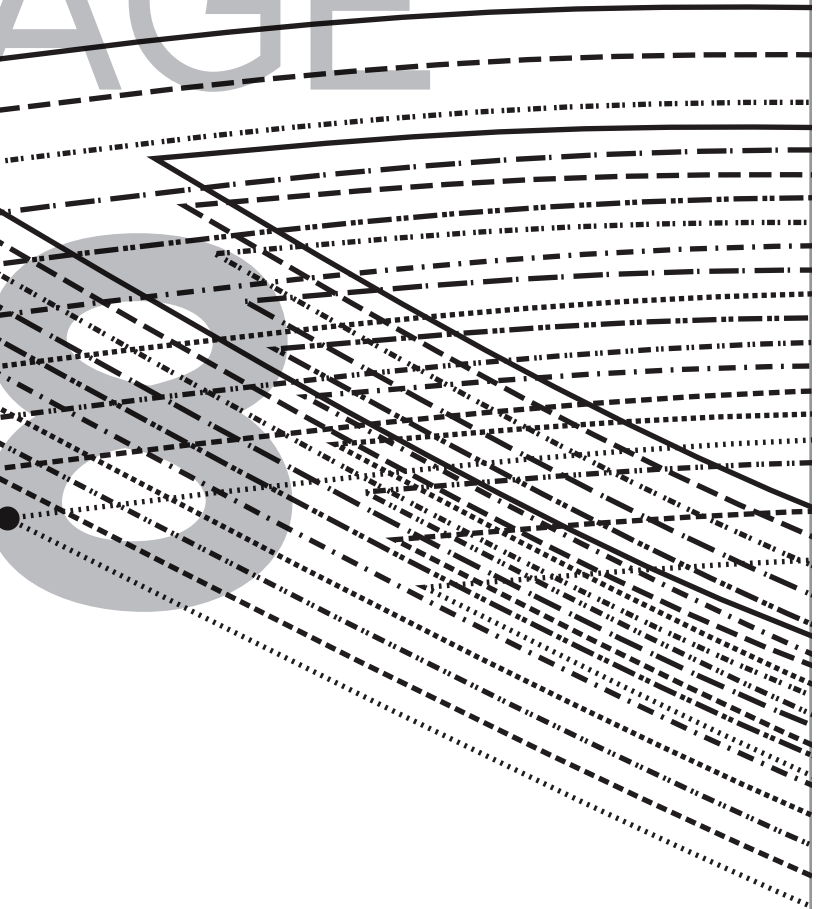
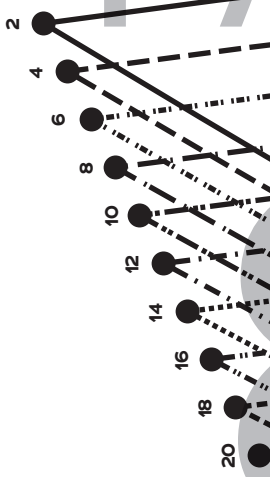
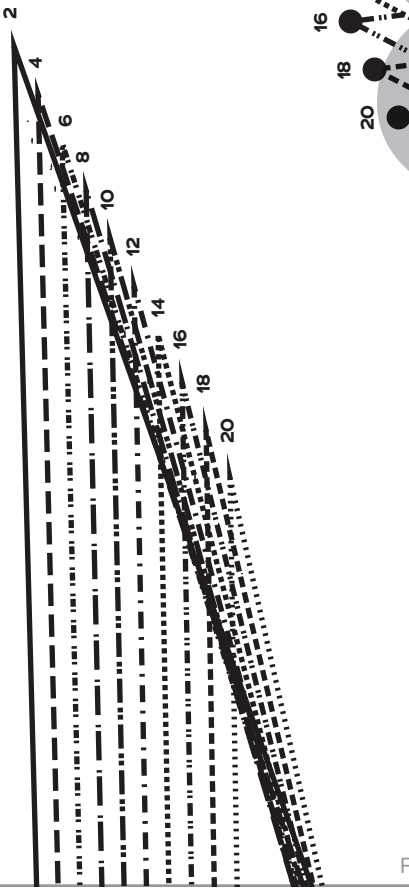
Bodice Front, D/DD Cup

Cut 1 fabric on fold, 1 lining on fold

FOLD BACK THIS MARGIN



PAGE



A7

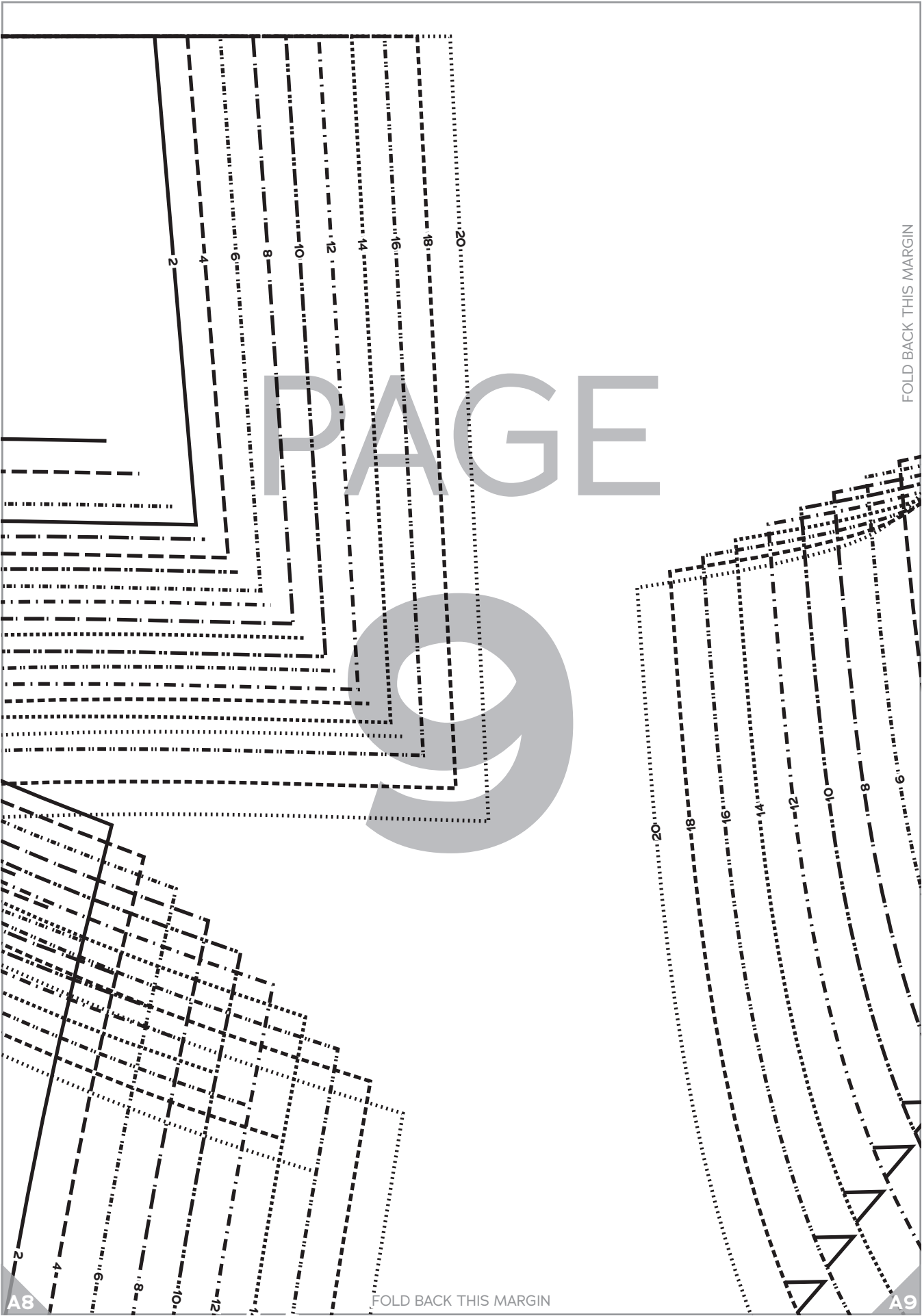
FOLD BACK THIS MARGIN

FOLD BACK THIS MARGIN

A8

FOLD BACK THIS MARGIN

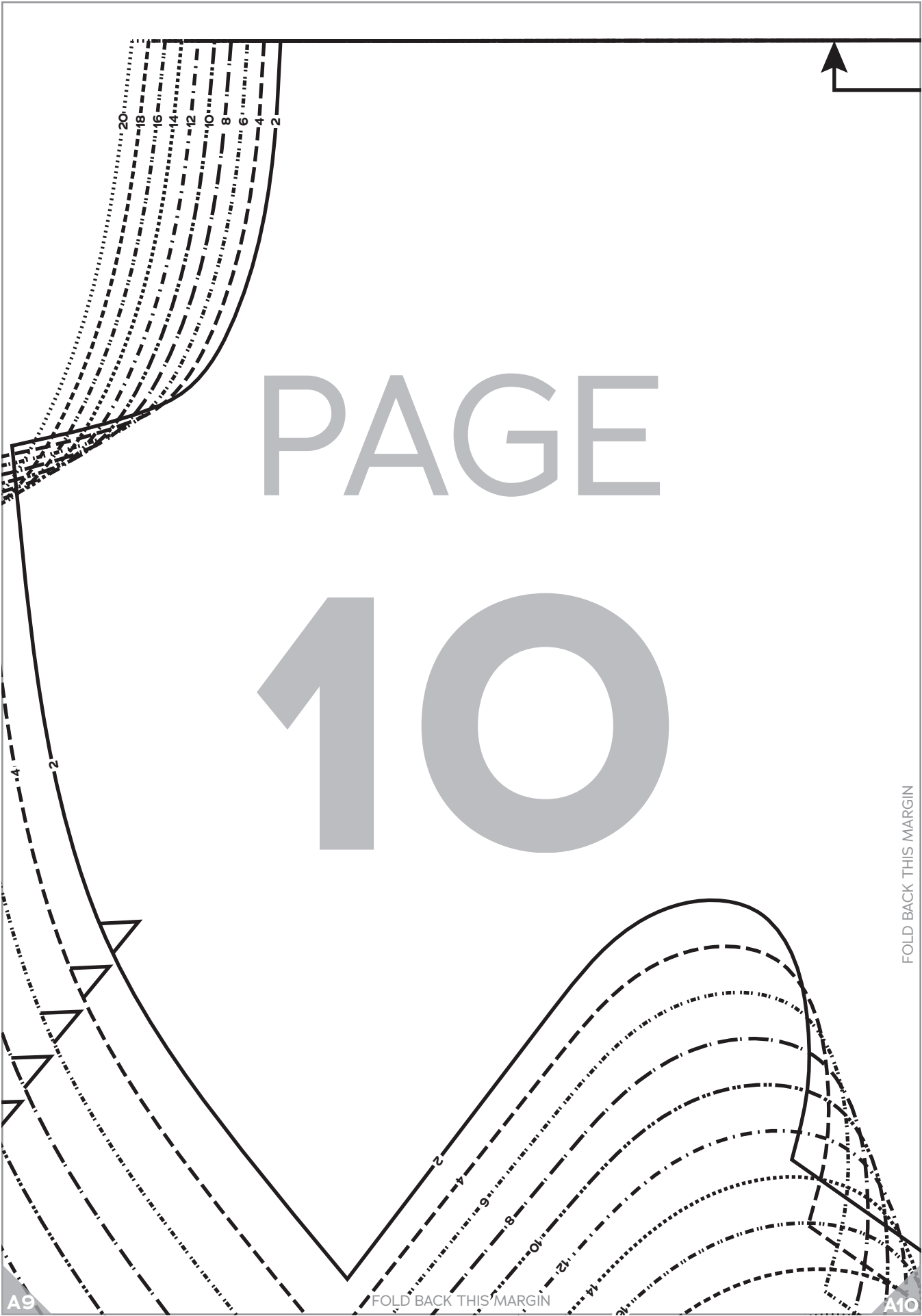
PAGE 9



PAGE

10

FOLD BACK THIS MARGIN





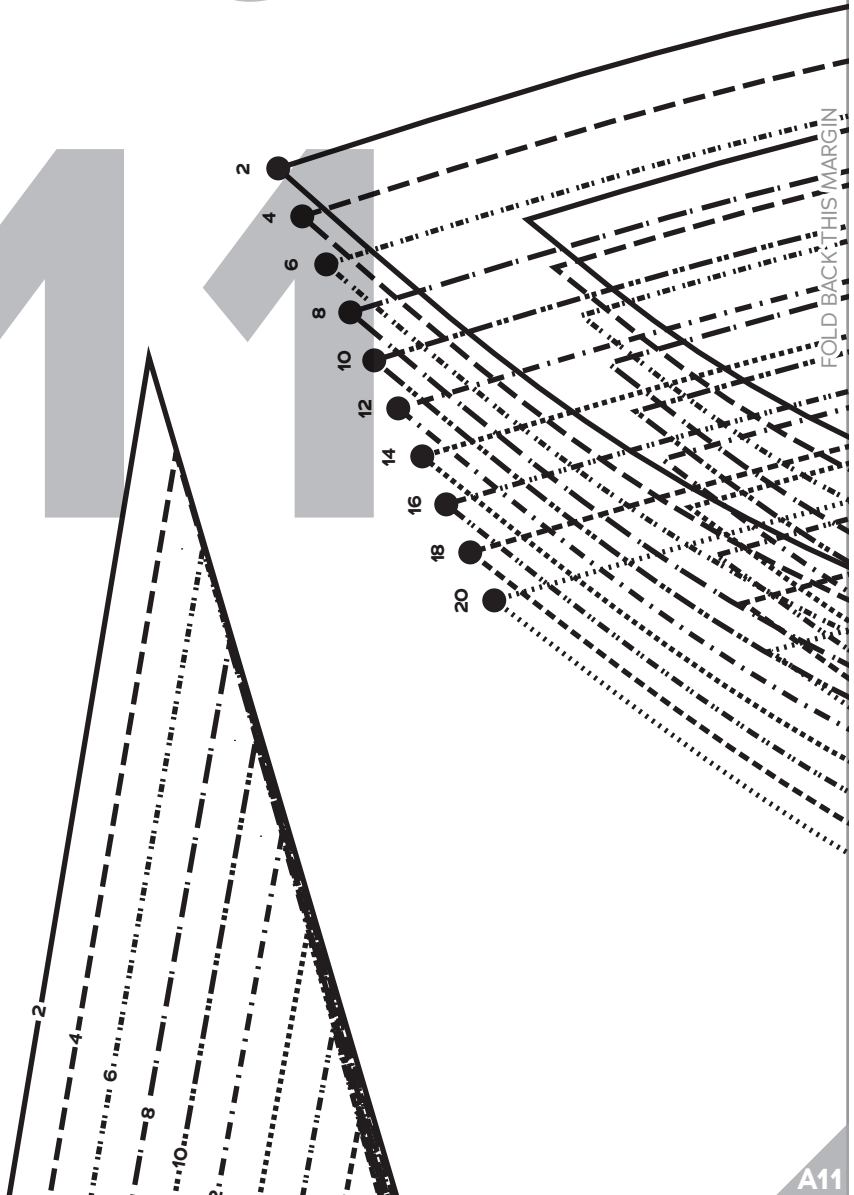
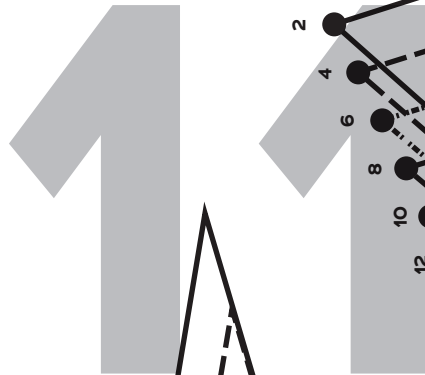
1 STANWYCK BODICE
AND COLLAR
SIZES 2-20

Bodice Front, H Cup

Cut 1 fabric on fold, 1 lining on fold

FOLD

PAGE



A10

FOLD BACK THIS MARGIN

A11

PAGE

12

2 4 6 8 10 12 14 16 18 20

A11

FOLD BACK THIS MARGIN

PAGE

CHARM PATTERNS by Gertie

2 STANWYCK BODICE AND COLLAR SIZES 2-20

Bodice Back

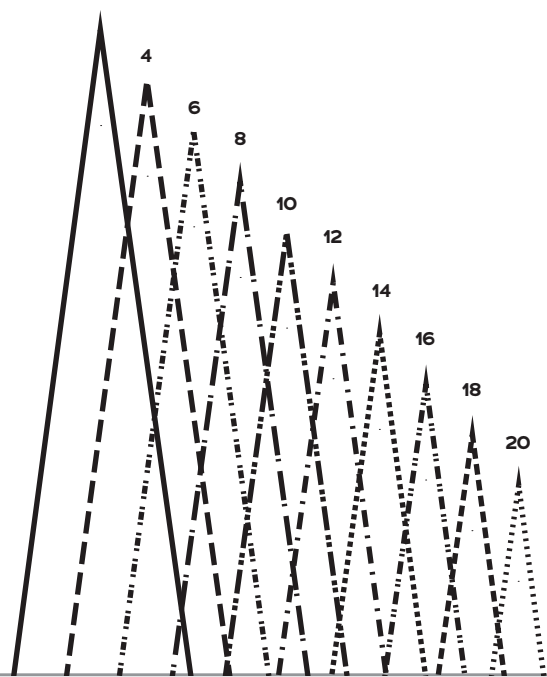
Cut 2 fabric, 2 lining

13



GRAINLINE

FOLD BACK THIS MARGIN



FOLD BACK THIS MARGIN

A1

A2

PAGE

14

FOLD BACK THIS MARGIN

B1

FOLD BACK THIS MARGIN

B2

2 4 6 8 10 12 14 16 18 20

A2

A3

PAGE

15

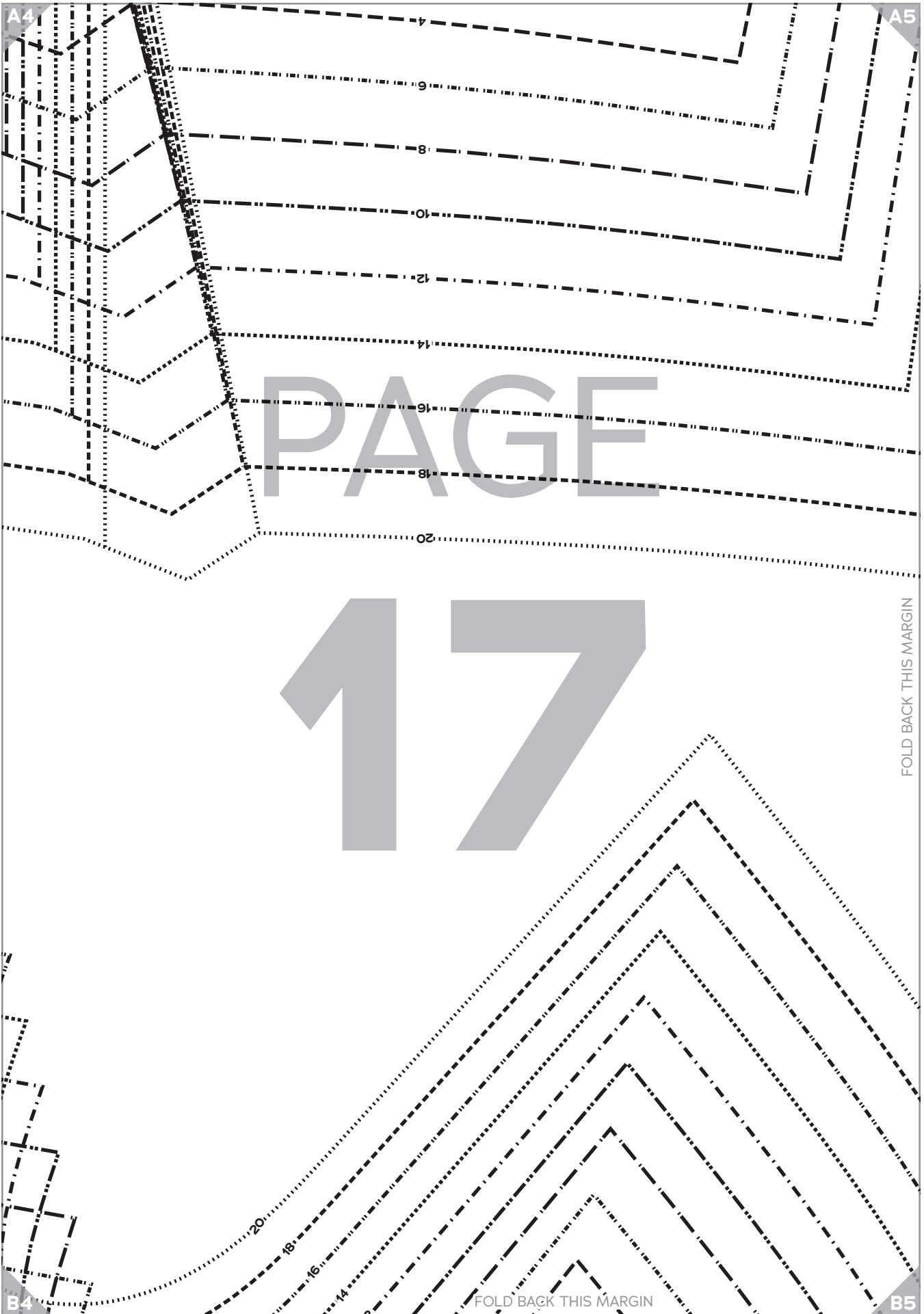
FOLD BACK THIS MARGIN

B2

FOLD BACK THIS MARGIN

B3





A5

A6

PAGE

18

B5

B6

FOLD BACK THIS MARGIN

FOLD BACK THIS MARGIN

20
18
16
14
12
10
8
6

A6

A7

PAGE

19

FOLD BACK THIS MARGIN

FOLD BACK THIS MARGIN

B6

B7

A7

A8

PAGE

20

FOLD BACK THIS MARGIN

B7

FOLD BACK THIS MARGIN

B8

A8

A9

PAGE

21

FOLD BACK THIS MARGIN

B8

B9

FOLD BACK THIS MARGIN

A9

A10

PAGE

22

FOLD BACK THIS MARGIN

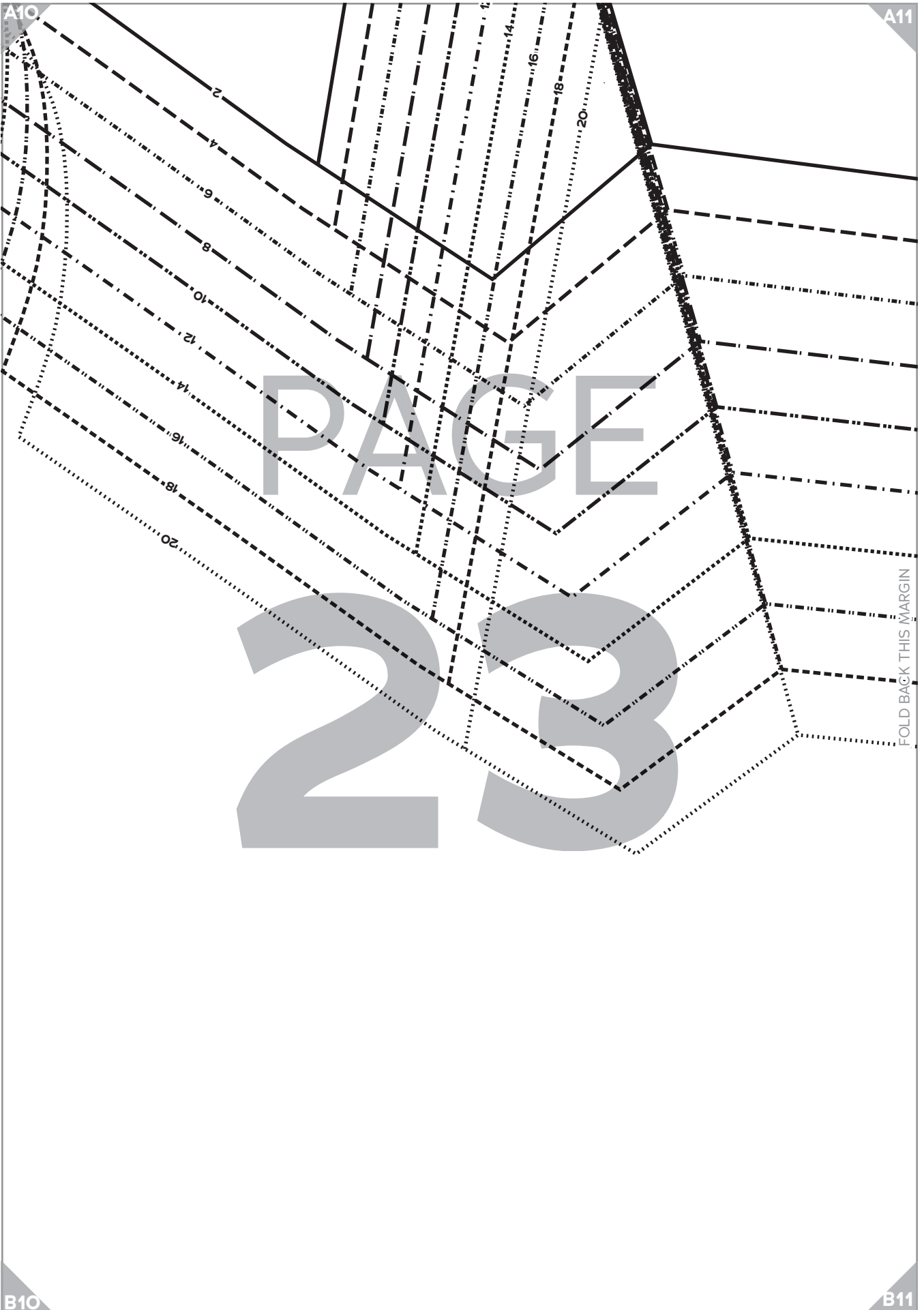
MATCH TO BODICE TO COLLAR PLACEMENT MARK

FOLD BACK THIS MARGIN

B10

A10

A11



PAGE

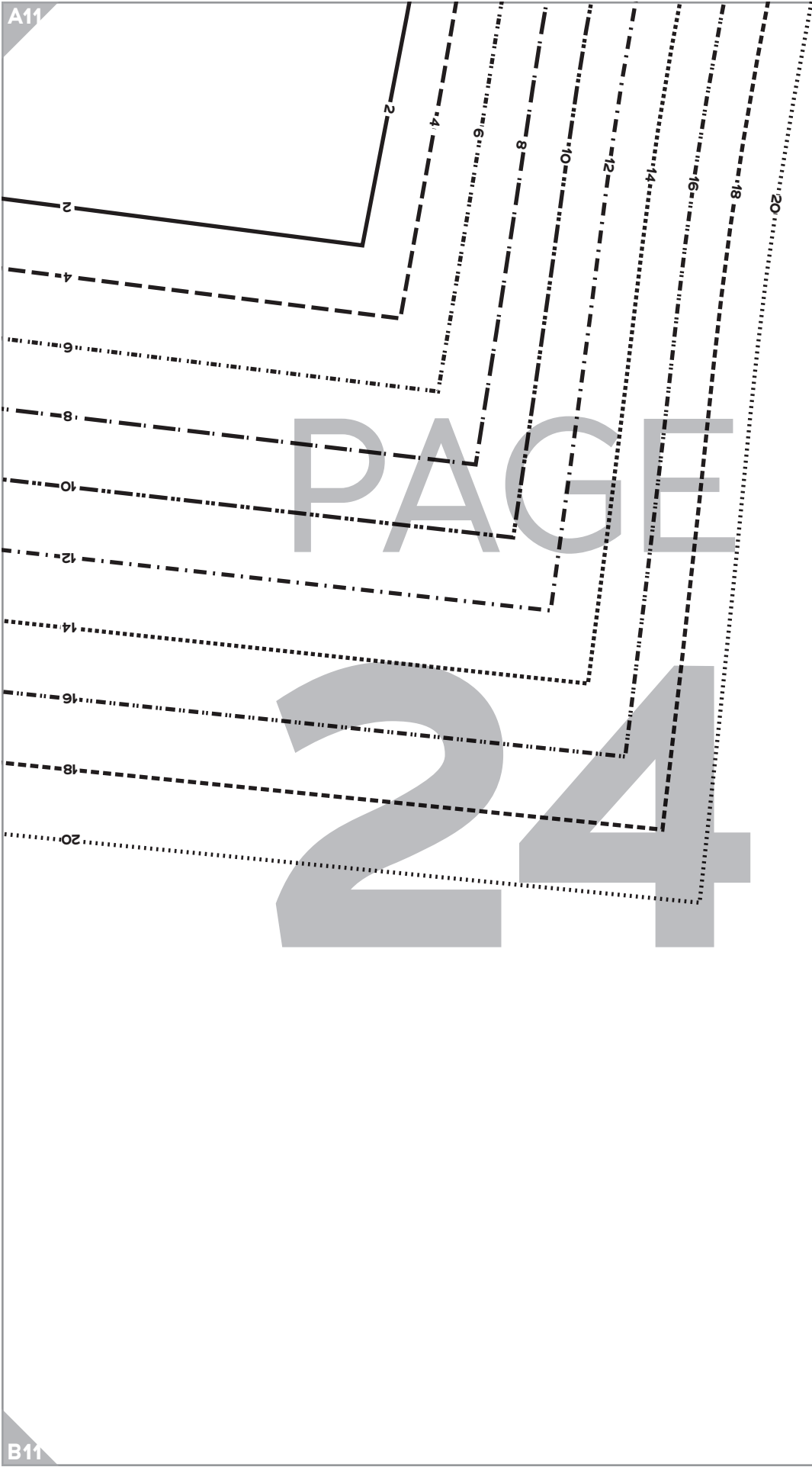
23

FOLD BACK THIS MARGIN

B10

B11

A11



B11

PAGE

2
4
6
8
10
12
14
16
18
20

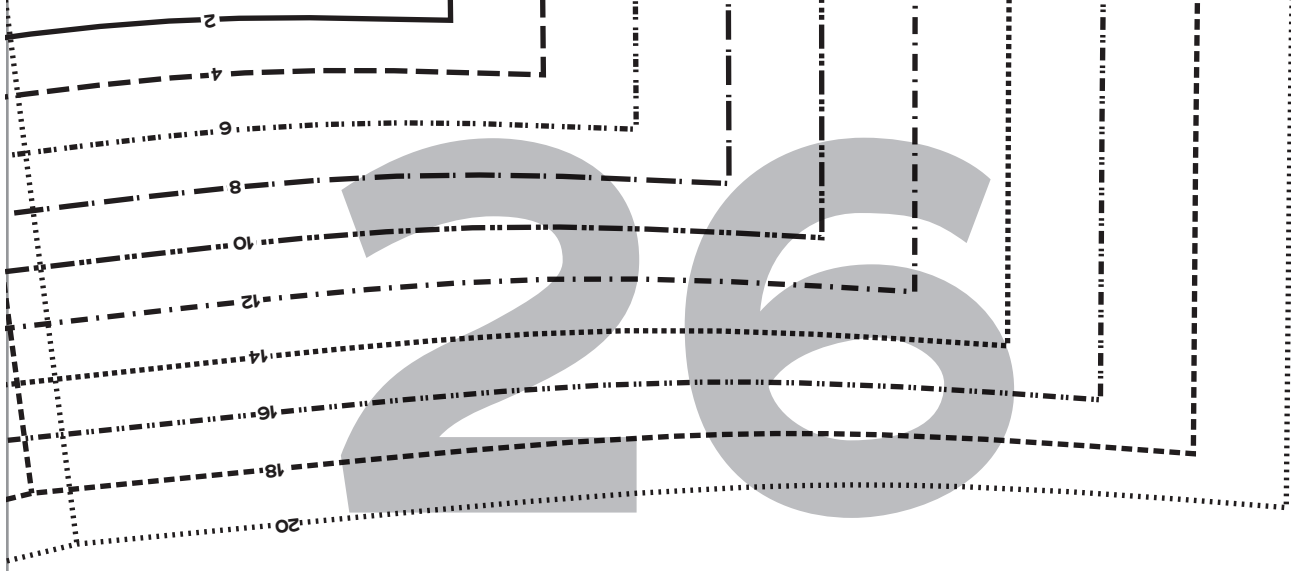
25

B1

B2

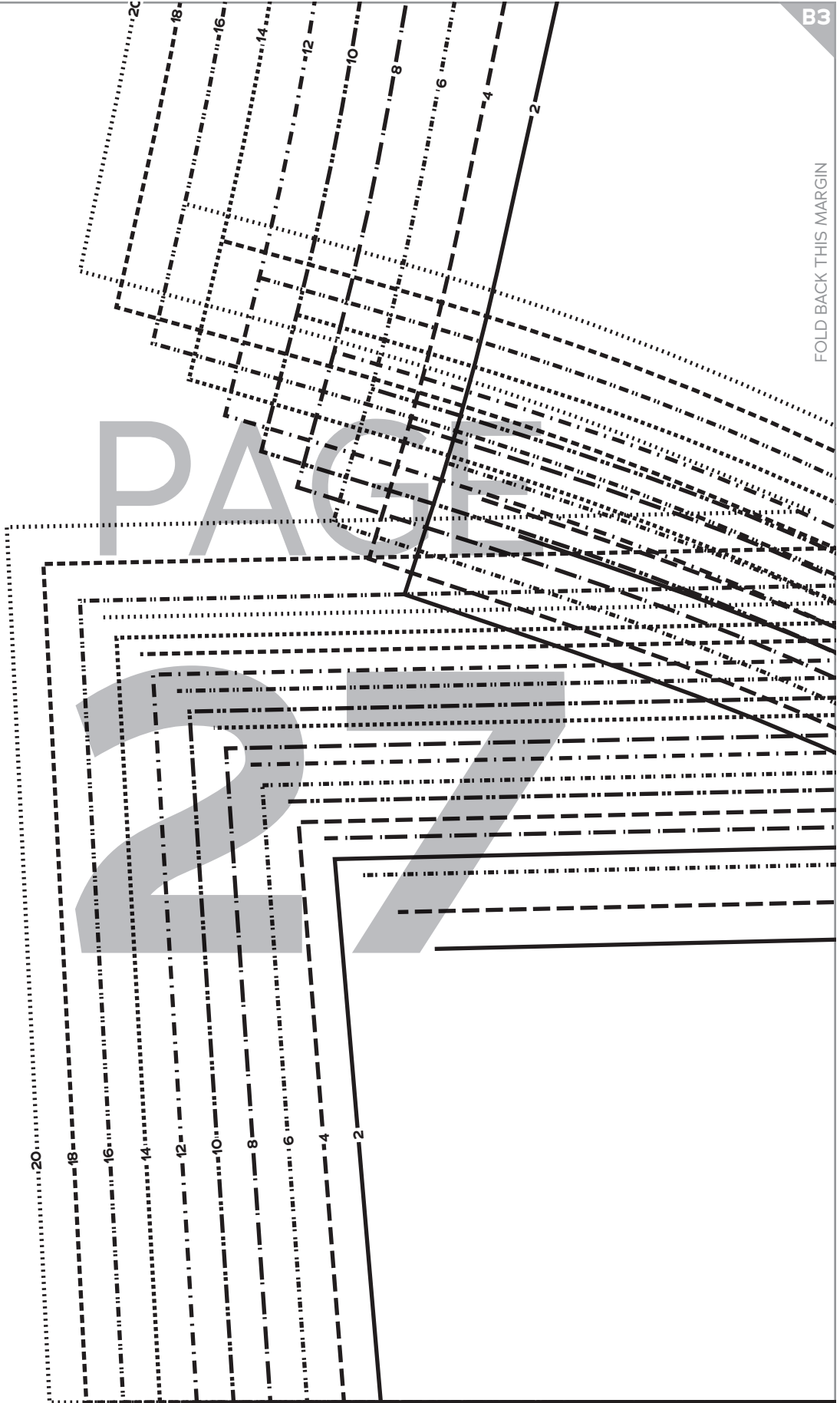
PAGE

26



B2

B3



FOLD BACK THIS MARGIN

PAGE 27

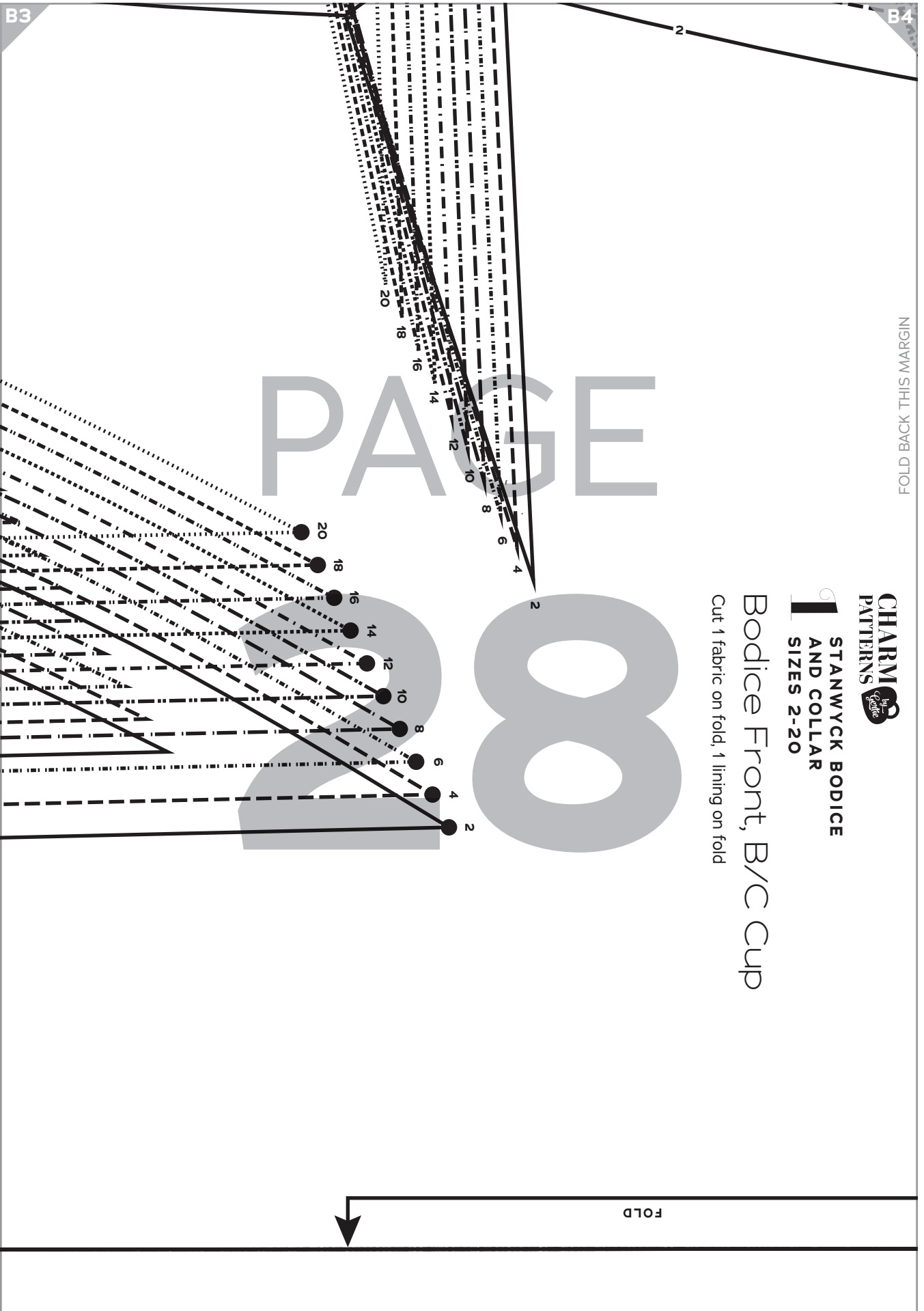
FOLD BACK THIS MARGIN



CHARM PATTERNS
STANWYCK BODICE AND COLLAR
SIZES 2-20

Bodice Front, B/C Cup

Cut 1 fabric on fold, 1 lining on fold



B4

B5

PAGE

29

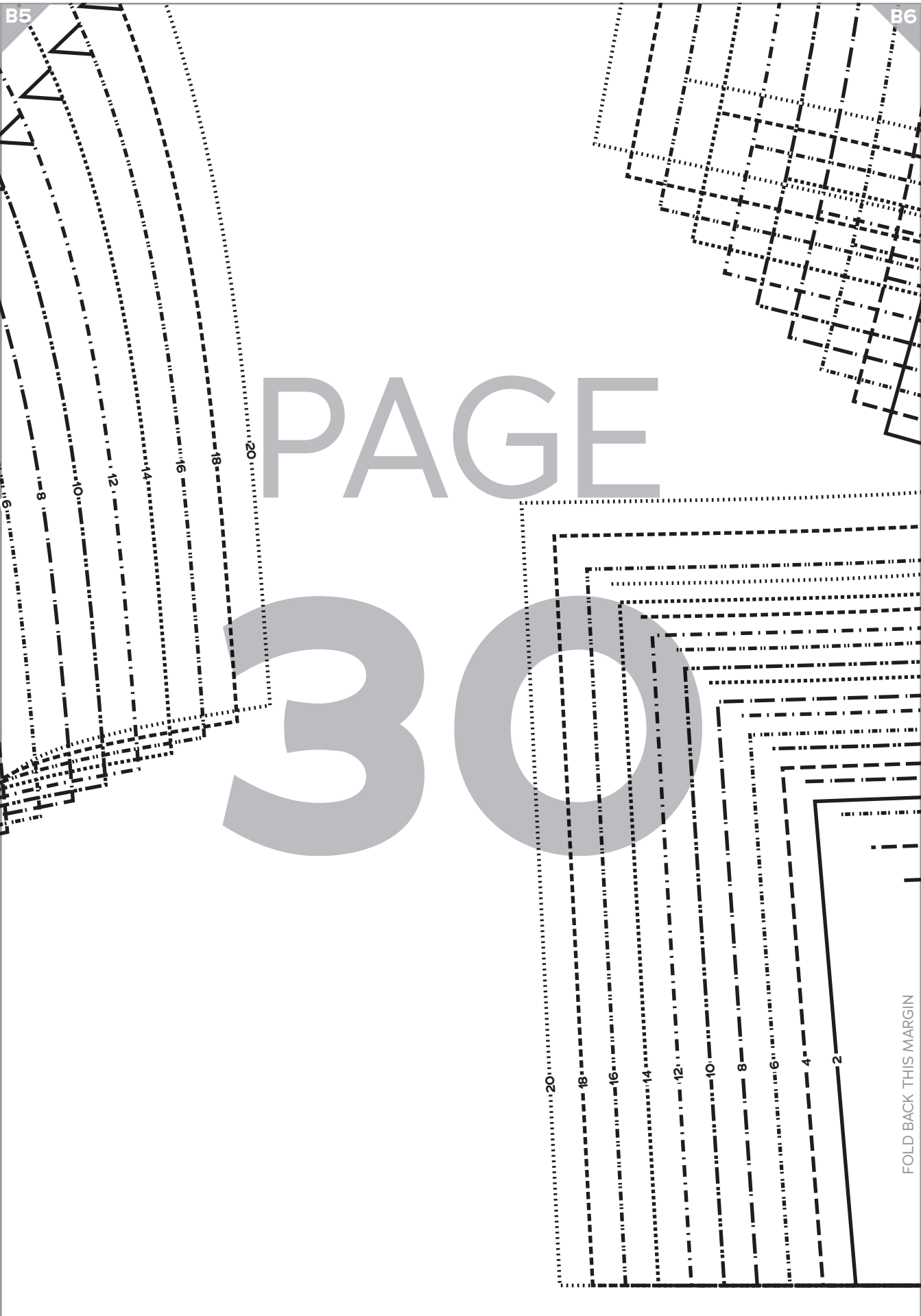
FOLD BACK THIS MARGIN



B5

B6

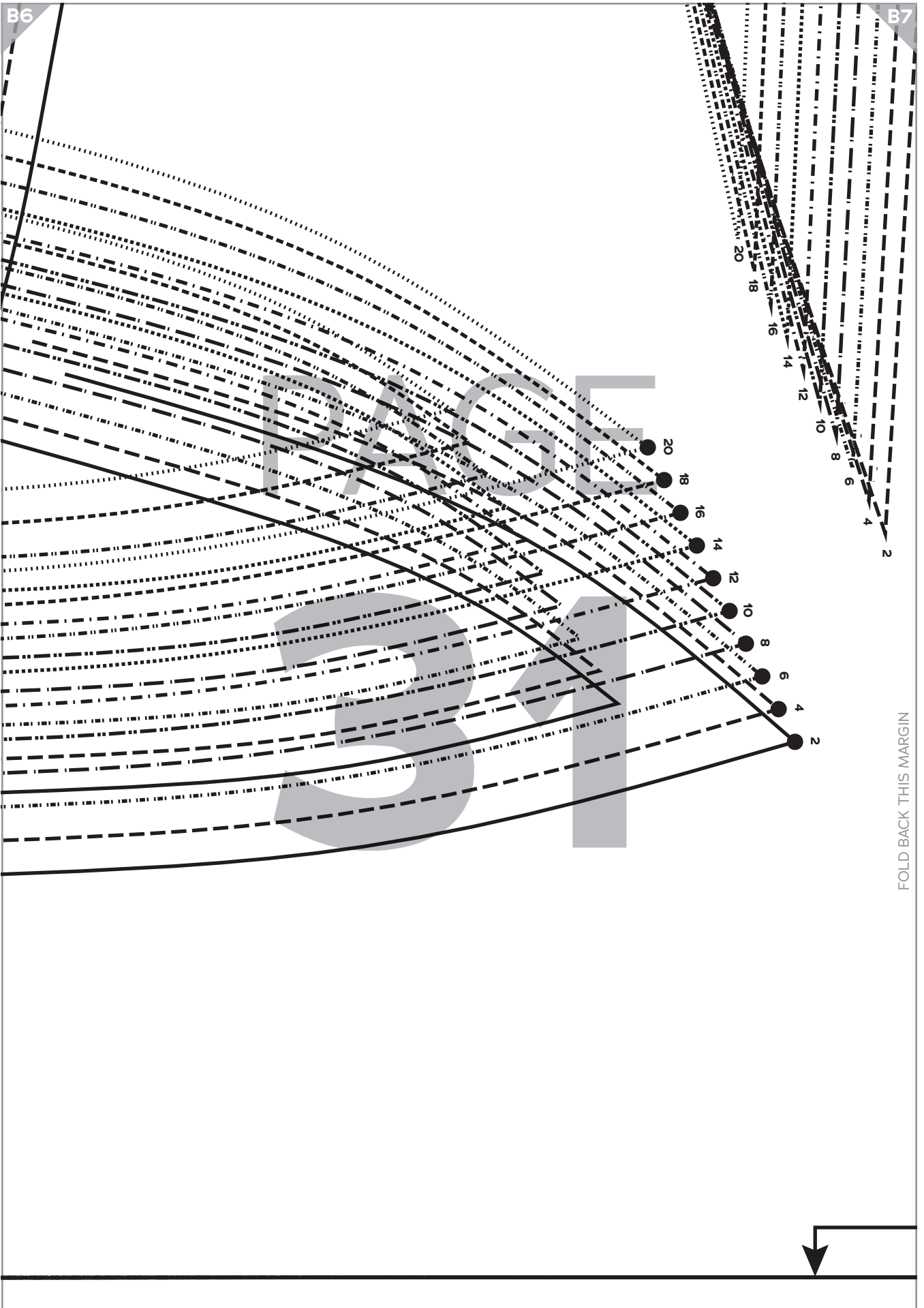
PAGE 30



FOLD BACK THIS MARGIN

B6

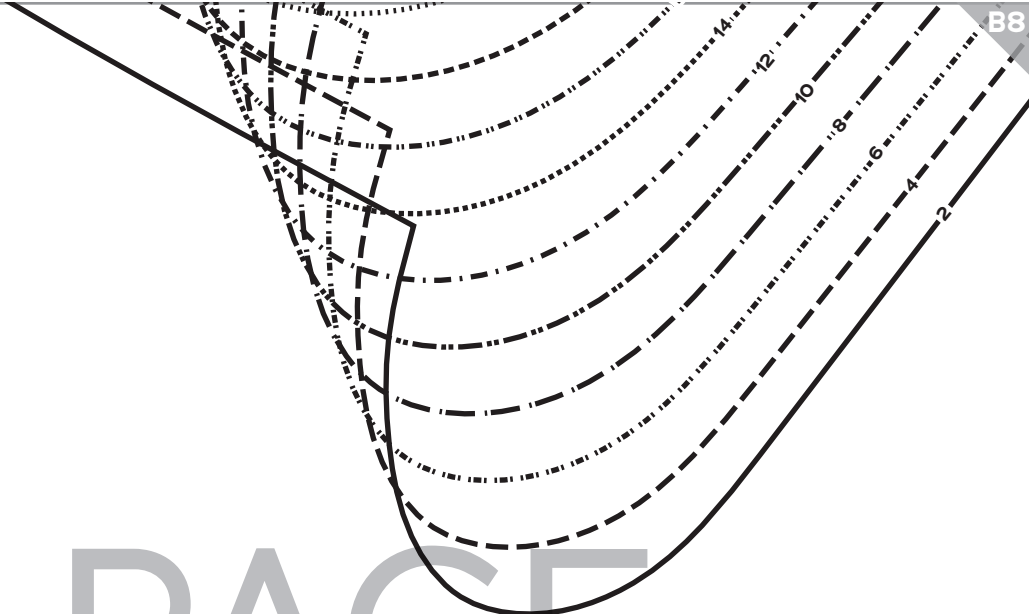
B7



FOLD BACK THIS MARGIN

B7

B8



PAGE

CHARM
 PATTERNS by Gertie

**STANWYCK BODICE
 AND COLLAR
 SIZES 2-20**

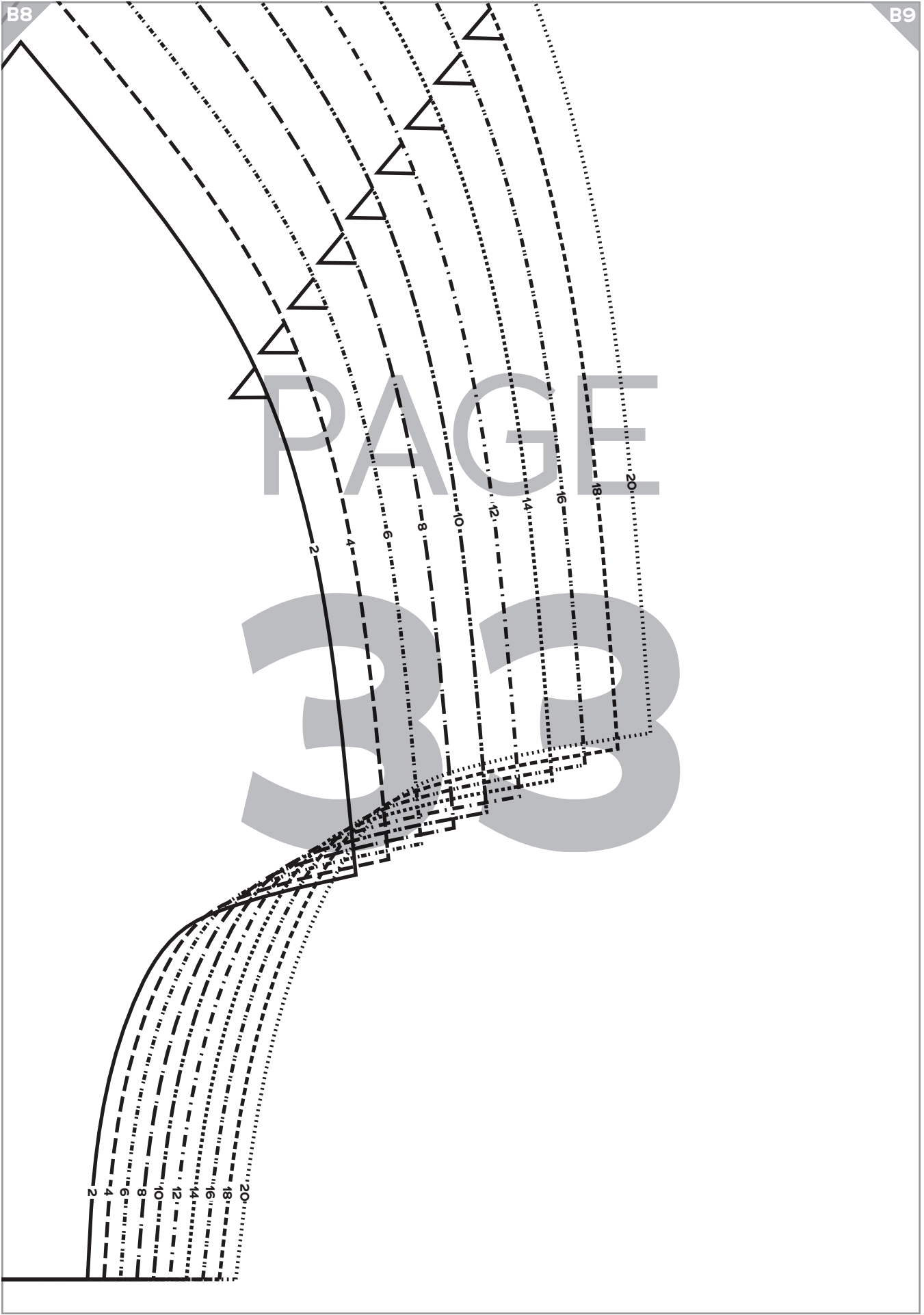
32

Bodice Front, F/G Cup
 Cut 1 fabric on fold, 1 lining on fold

FOLD BACK THIS MARGIN

FOLD







CHARM
 PATTERNS
 by Gertie

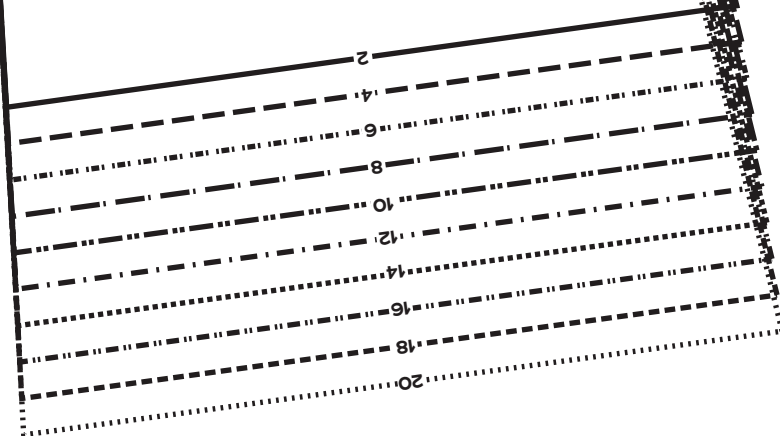
**STANWYCK BODICE
 AND COLLAR
 SIZES 2-20**

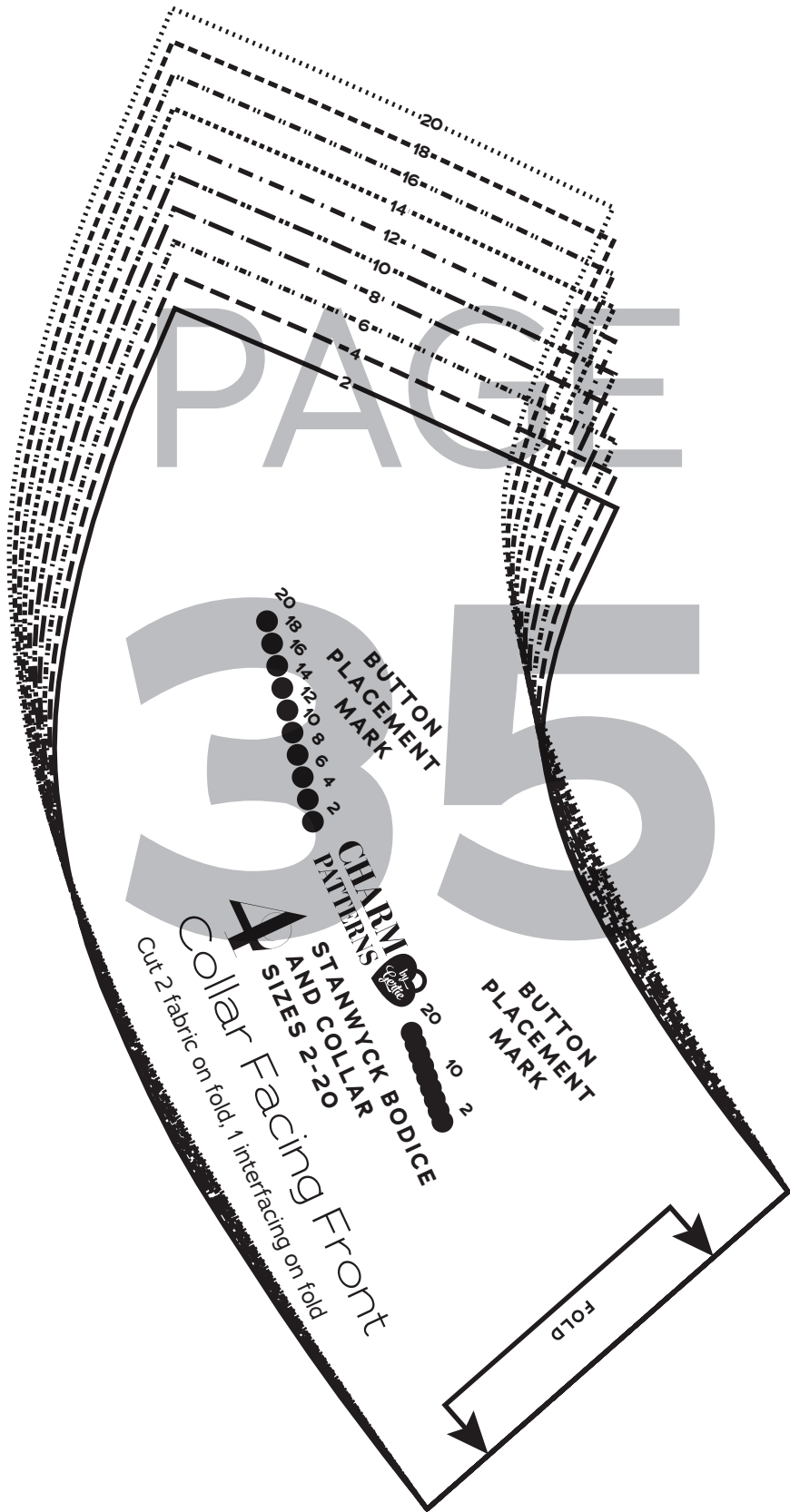
Collar

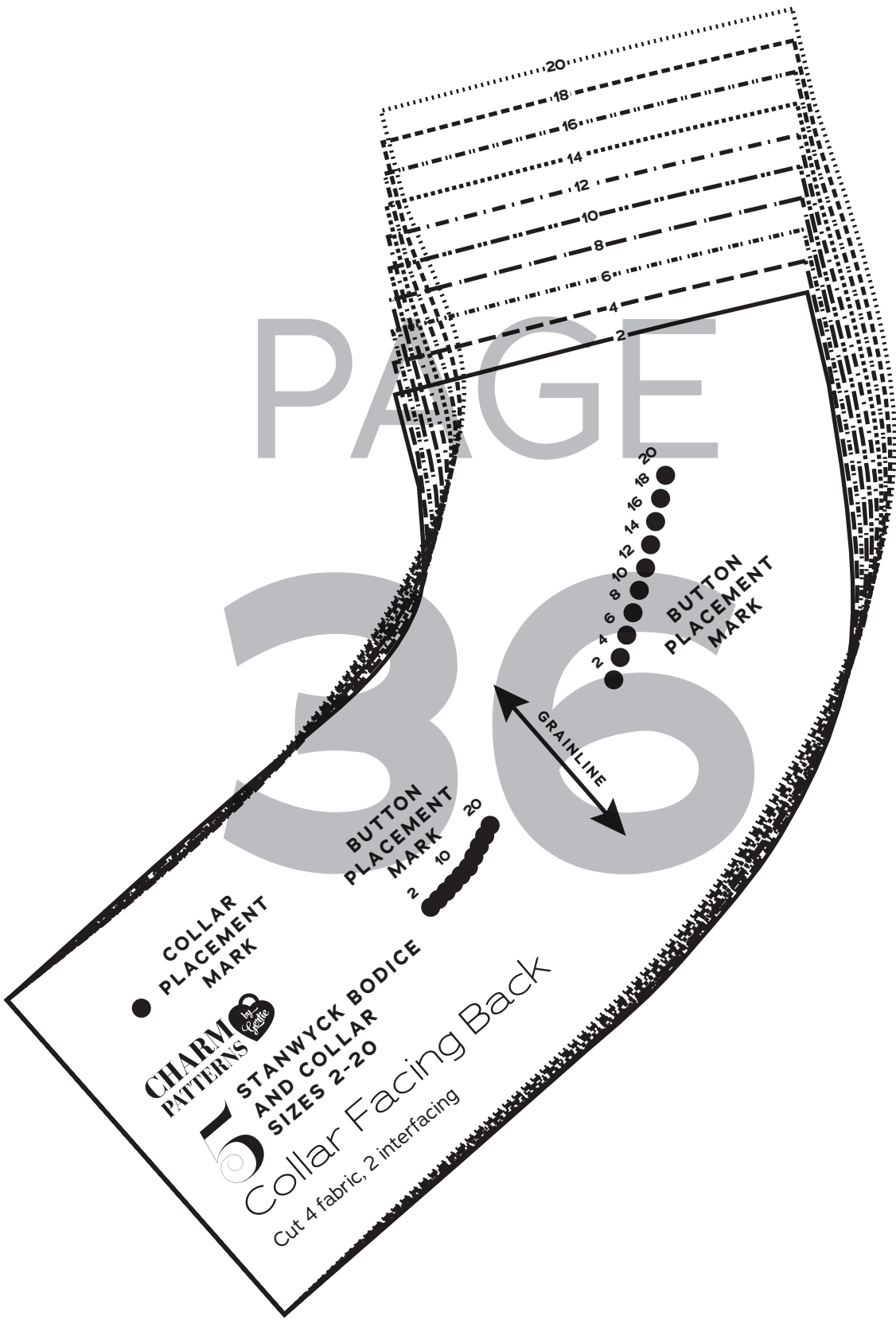
Cut 4 fabric, 2 interfacing

PAGE

34







● COLLAR PLACEMENT MARK

CHARM PATTERNS by Gertie

15 STANWYCK BODICE AND COLLAR SIZES 2-20

Collar Facing Back
Cut 4 fabric, 2 interfacing

● BUTTON PLACEMENT MARK
2 10 20

↔ GRAINLINE

● BUTTON PLACEMENT MARK
2 4 6 8 10 12 14 16 18 20

PAGE 36