

The Office

The Scrantones



Tenthumbspro.com
For educational purposes only

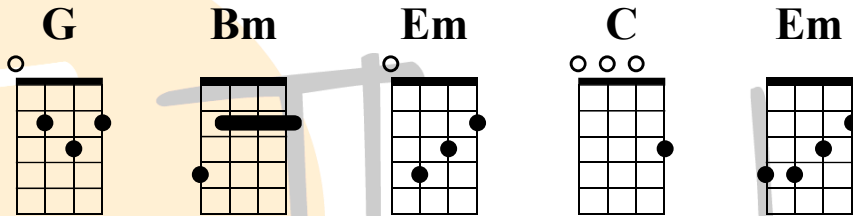
Key: G

BPM: 168 BPM

Chords needed: G, Bm, Em, C

Video Tutorial: <https://www.youtube.com/watch?v=Hqhdx-BWtz8>

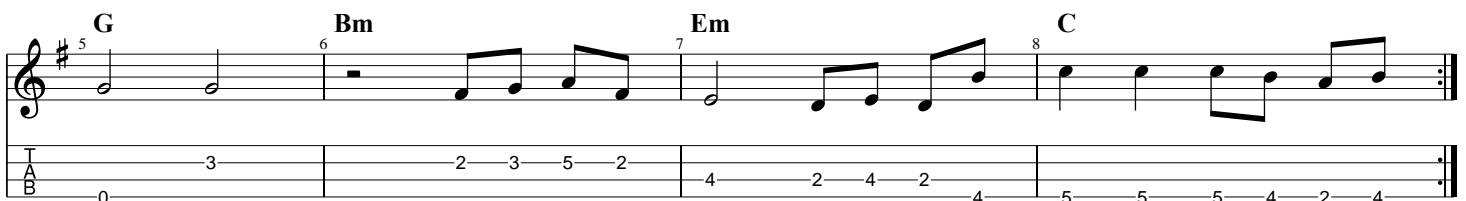
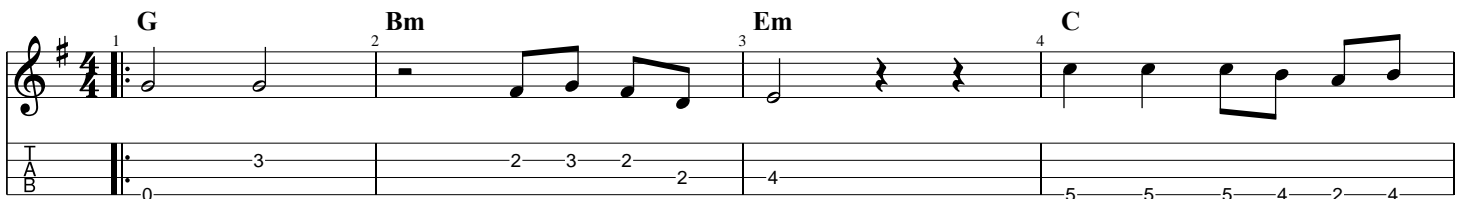
Chord Shapes:



Strum Pattern - Repeats throughout the jam

1 & 2 & 3 & 4 & | 1 & 2 & 3 & 4 & | 1 & 2 & 3 & 4 & | 1 & 2 & 3 & 4 & |
G | **Bm** | **Em** | **C** |
 D D D U | D D D U | D D D U | D D D U |

Low G Riff - This still sound good without the low G but it is the jump up to the B and the C string that make it a low G riff.



High G Riff - This is way up the fretboard but it also sounds great and works on any high G ukulele

Chords: G, Bm, Em, C

Chords: G, Bm, Em, C

A fun little chord melody idea to play around with as well

Measures 9-12

Measures 13-16