

ISSUE
PROJECT
ROOM

140 Second Avenue #503
New York, NY 10003
718-330-0313 x 1
issueprojectroom.org

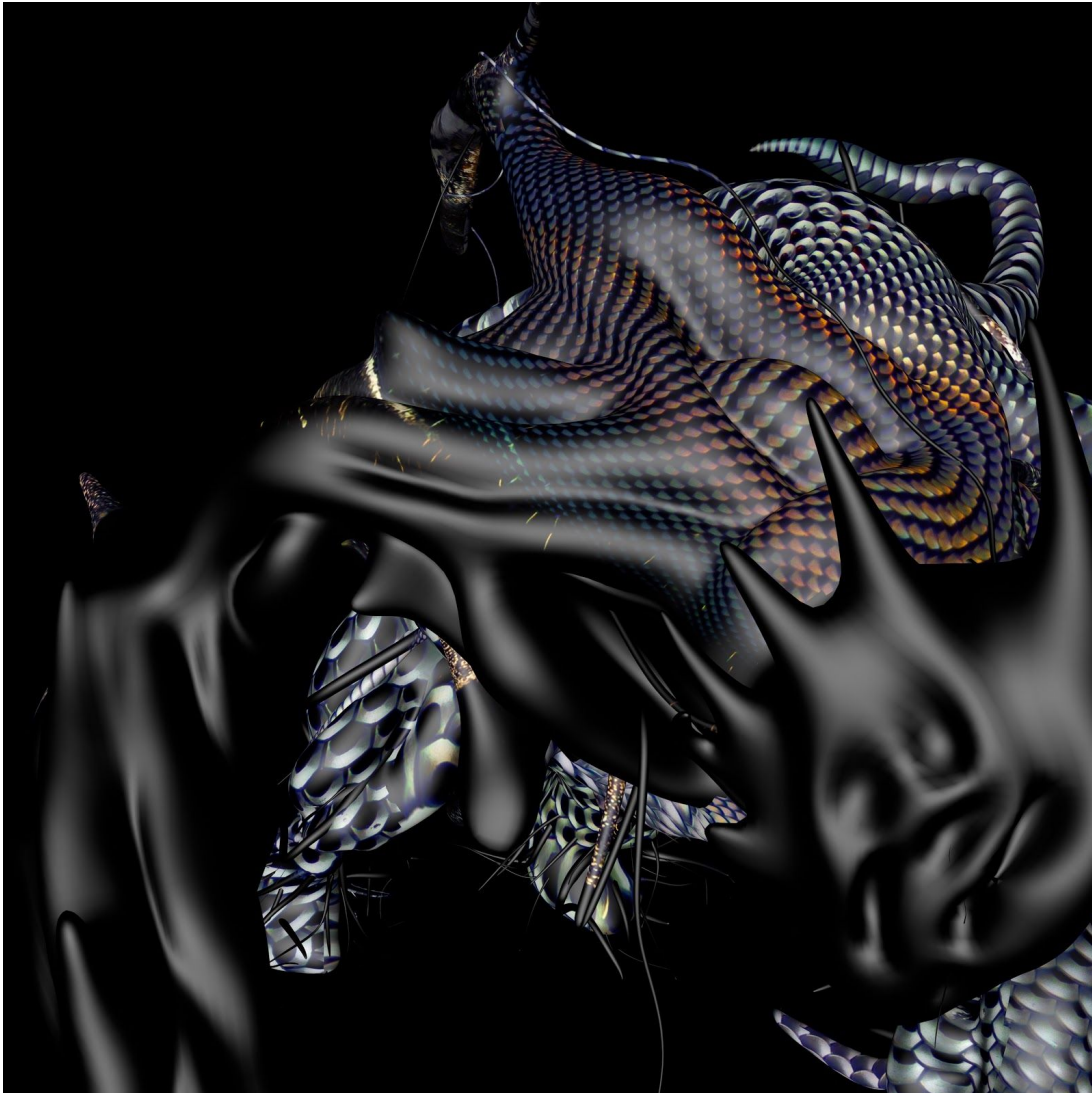
Press Contact: Nick Scavo
nick@issueprojectroom.org

Isolated Field Recording Series: *Bergsonist - D'un fragment à l'autre*

Wednesday, May 6th, 2020 - 8pm

Stream on ISSUE's website, Vimeo, and Facebook Live

ISSUE Project Room: <https://issueprojectroom.org/events>



Artwork: Bergsonist

Wednesday, May 6th at 8pm EST, ISSUE is pleased to present *D'un fragment à l'autre*, a new project from multidisciplinary artist and musician **Bergsonist**. Translating to “from one fragment to another,” *D'un fragment à l'autre* is a sonic retrospective of “exhumed” fragments from the artist’s published body of work and visual collaboration with multimedia artist and longtime visual collaborator **Greg Zifcak**. The recording is part of the *Isolated Field Recording Series*, commissioning artists to produce field recordings to be streamed over the course of this challenging and isolated time.

A note from Bergsonist on *D'un fragment à l'autre*

I've always been working fragments, weather in design or music. The context always brings meaning to the fragments to create a piece. This live composition will delve into my endless archive of hours of sonic exploration. Before making any songs, I always tend to just experiment and record drafts. The drafts are essential in the assembling of the final piece. Working in fragments is important as it allows you to change the scale of perception and further understand our medium. To go macro scale, composing a sonic piece, you need to *a priori* go micro and pay attention to details.

This pandemic has been pushing me to think more about the lost bits that I use to build my work. Listening to these will allow me to move on.

[Read “Elaborate Intuition.”](#) an interview between Bergsonist & Greg Zifcak discussing their collaborative process on BOMB Magazine

Selwa Abd, also known as **Bergsonist**, is a New York-based multidisciplinary artist and musician originally from Morocco. She is the founder of [Bizaarbazaar](#), a music platform & publication featuring podcasts and interviews by worldwide musicians and DJs. Under the guise of Bergsonist (derived from Deleuze's Bergsonism), she uses a variety of media to investigate social resonance through divergent conceptual aesthetics (minimalism, music concrete to name a few). Through her work, she explores notions of identity, memory, and social politics. She is represented by Discwoman and hosts a monthly show on NTS radio. She also curates other projects such as the NYC based resource platform [Pick Up The Flow](#) with Stephen Decker and the collective [3afak](#) with Sanna Almajedi. Her most recent body of work is the sonic autobiography “[Middle Owest](#),” a full length album released via Optimo Music. More can be found in this [article](#).

Greg Zifcak is a musician and artist whose work crosses boundaries between club music, video processing, and stroboscopic light manipulation, often combining and conflating these media using custom-built hardware.

###

In response to COVID-19's impact on public assembly and our subsequent suspension of public programming, ISSUE's *Isolated Field Recordings Series* commissions artists to produce field recordings to be streamed over the course of this challenging and isolated time. The series will support artists directly in an unprecedented moment of uncertainty, struggle, and financial risk and emphasize the solidarity of artists working in a situation where everyday life is confined and separated. Focusing on recordings from artists' current conditions, the series will broadly approach the field recording as an expanded form and open invitation to experiment with home audio recording during this period of social distancing. The series will include forthcoming presentations by Derek Baron (5/13), Jules Gimbrone (5/14), and Kim Brandt (5/20). All times are 8pm EST.

Founded in 2003, **ISSUE Project Room** is a pioneering nonprofit performance center, presenting projects by interdisciplinary artists that expand the boundaries of artistic practice and stimulate critical dialogue in the broader community. ISSUE serves as a leading cultural incubator, facilitating the commission and premiere of innovative new works.

ISSUE Project Room's *Isolated Field Recording Series* is supported, in part, by the Café Royal Cultural Foundation.



As a part of ISSUE Project Room's ongoing 2020 Spring Season, this series is supported, in part, by public funds from the New York City Department of Cultural Affairs in partnership with the City Council, and the New York State Council on the Arts with the support of Governor Andrew Cuomo and the New York State Legislature. ISSUE gratefully acknowledges additional 2020 Spring Season support from NOKIA Bell Labs, The Golden Rule Foundation, Howard Gilman Foundation, and TD Charitable Foundation.

