



# CHARLOTTE BERET



Sizes Small,  
Medium & Large

5/8 inch (in) (1.5 cm) seam allowances  
are included on all pattern pieces.

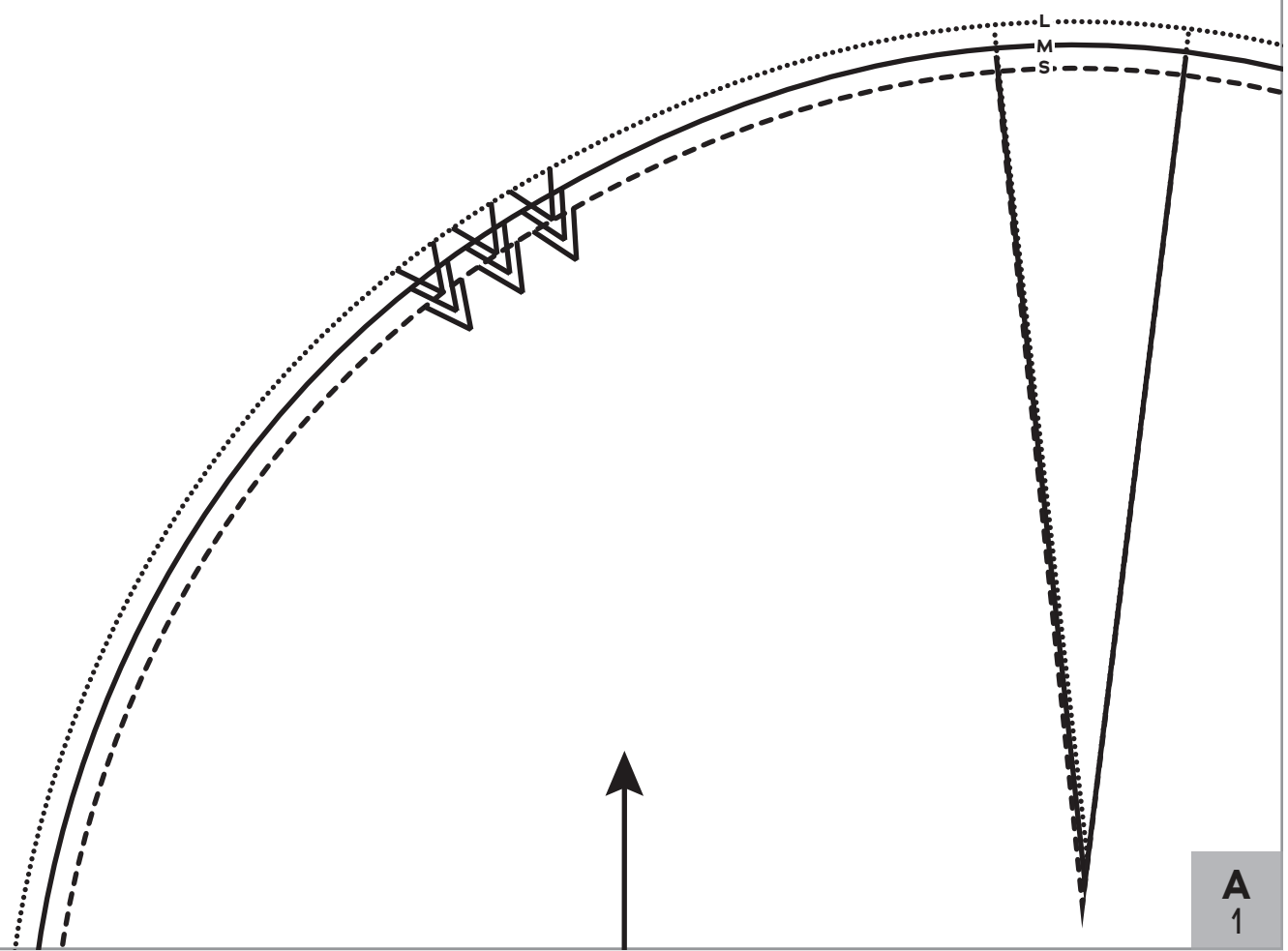
### PATTERN SIZE KEY

- S - - - - -
- M ————
- L ········

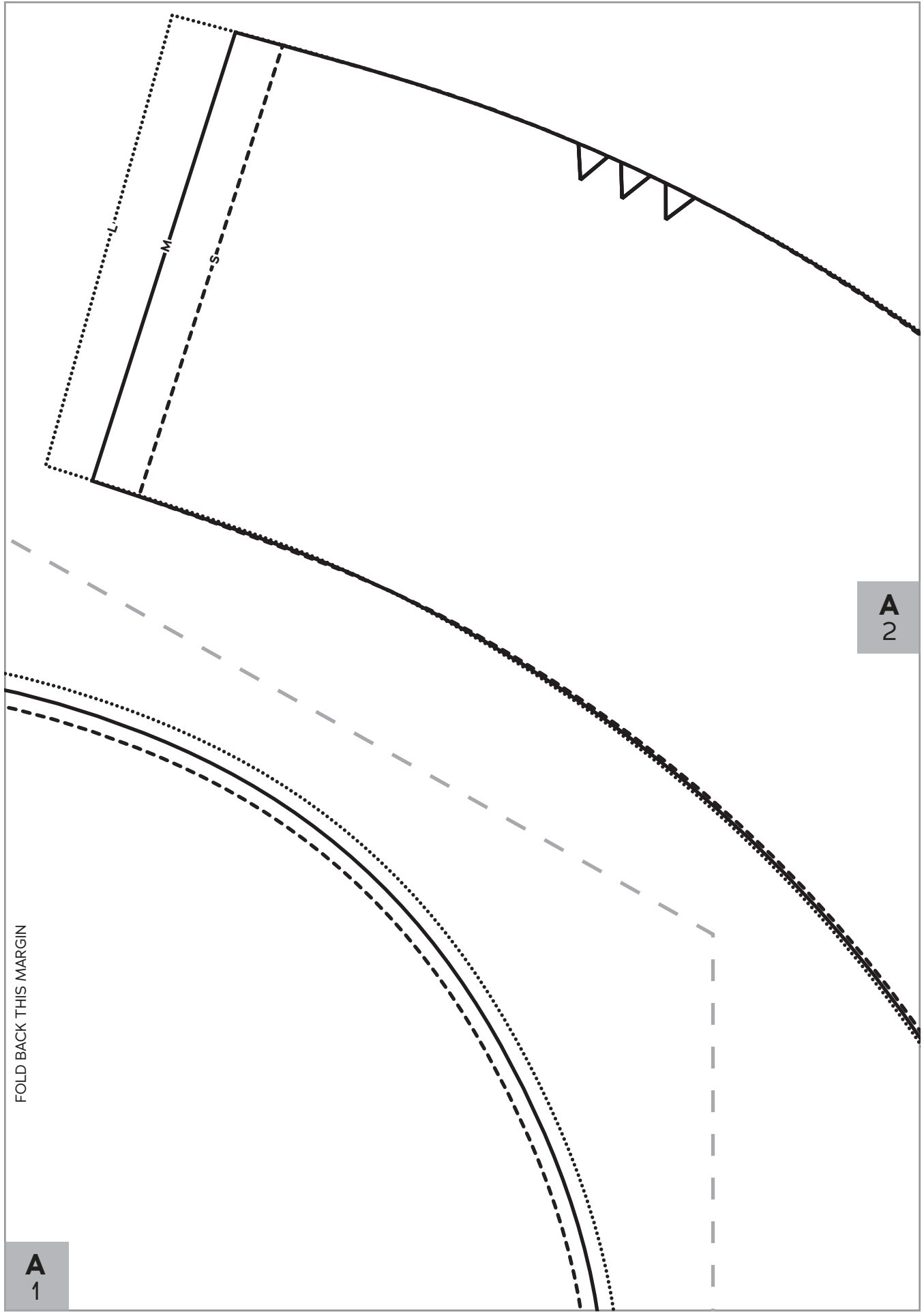
### SYMBOL KEY

- grainline arrow 
- match point/  
placement mark 

**1" test  
square**



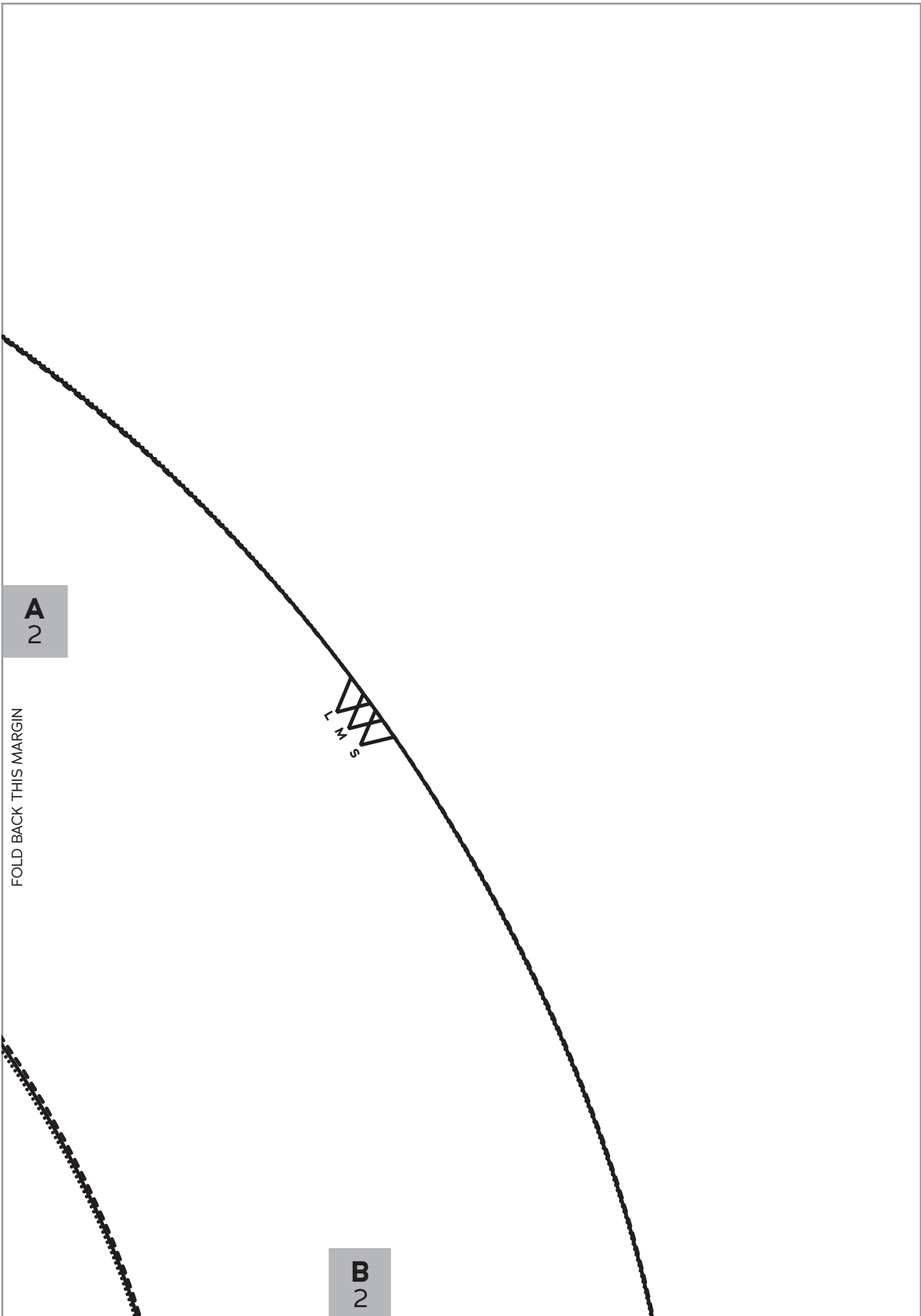
**A  
1**



A  
2

FOLD BACK THIS MARGIN

A  
1



**A**  
2

FOLD BACK THIS MARGIN

L  
M  
S

**B**  
2

FOLD BACK THIS MARGIN

A  
1



# CHARLOTTE BERET

1

## Beret Crown

Cut 1 fabric, 1 interfacing  
(optional)

GRAINLINE



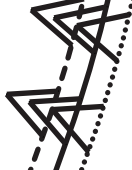
CENTER FRONT

S  
M  
L

**A**  
1

FOLD BACK THIS MARGIN

FOLD BACK THIS MARGIN



**C**  
2

**D**  
2

**B**  
2

FOLD BACK THIS MARGIN



CENTER FRONT

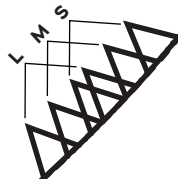


**CHARLOTTE  
BERET**

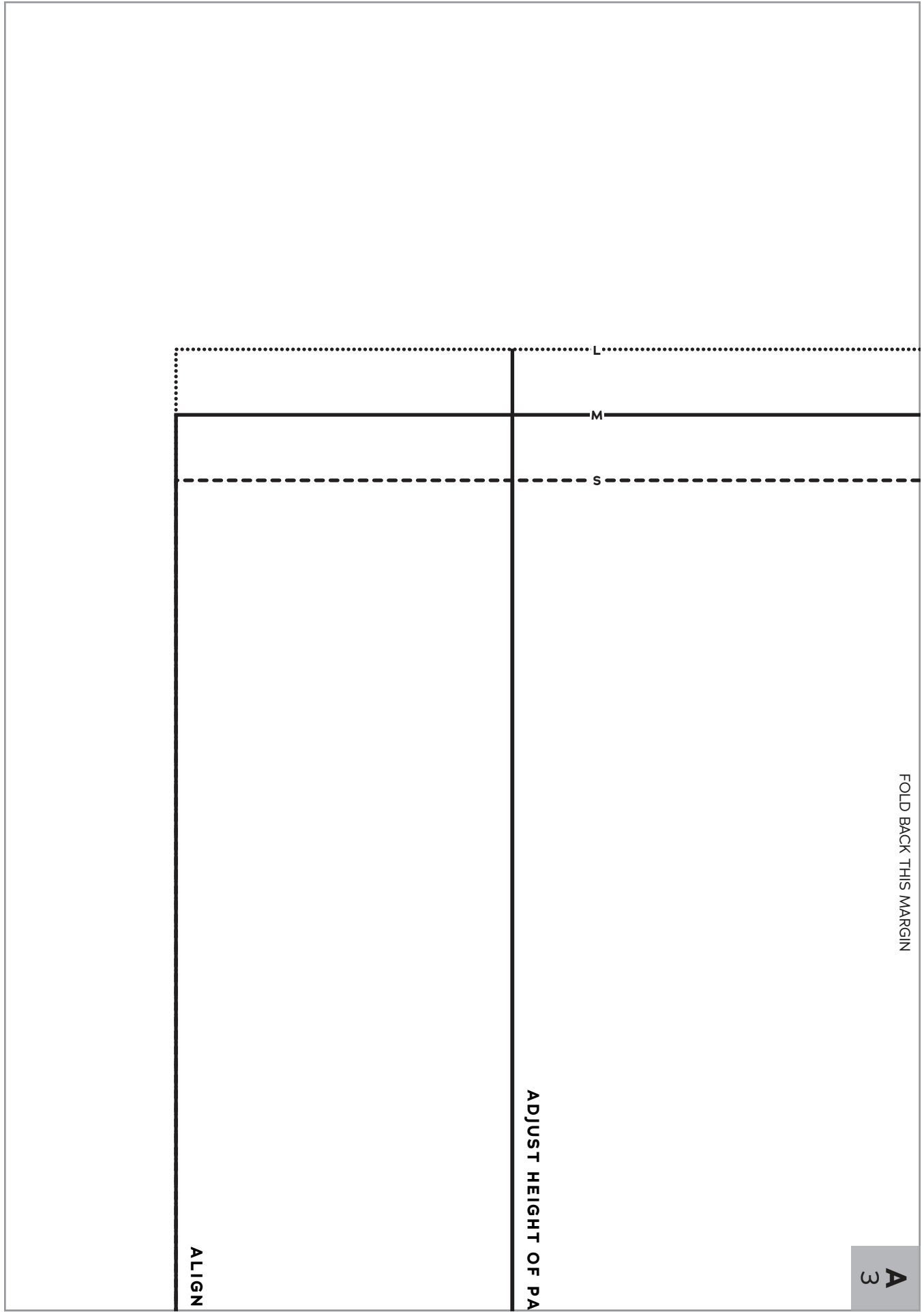
**2**

Beret Brim

Cut 1 fabric, 1 interfacing  
(optional)



**C**  
2



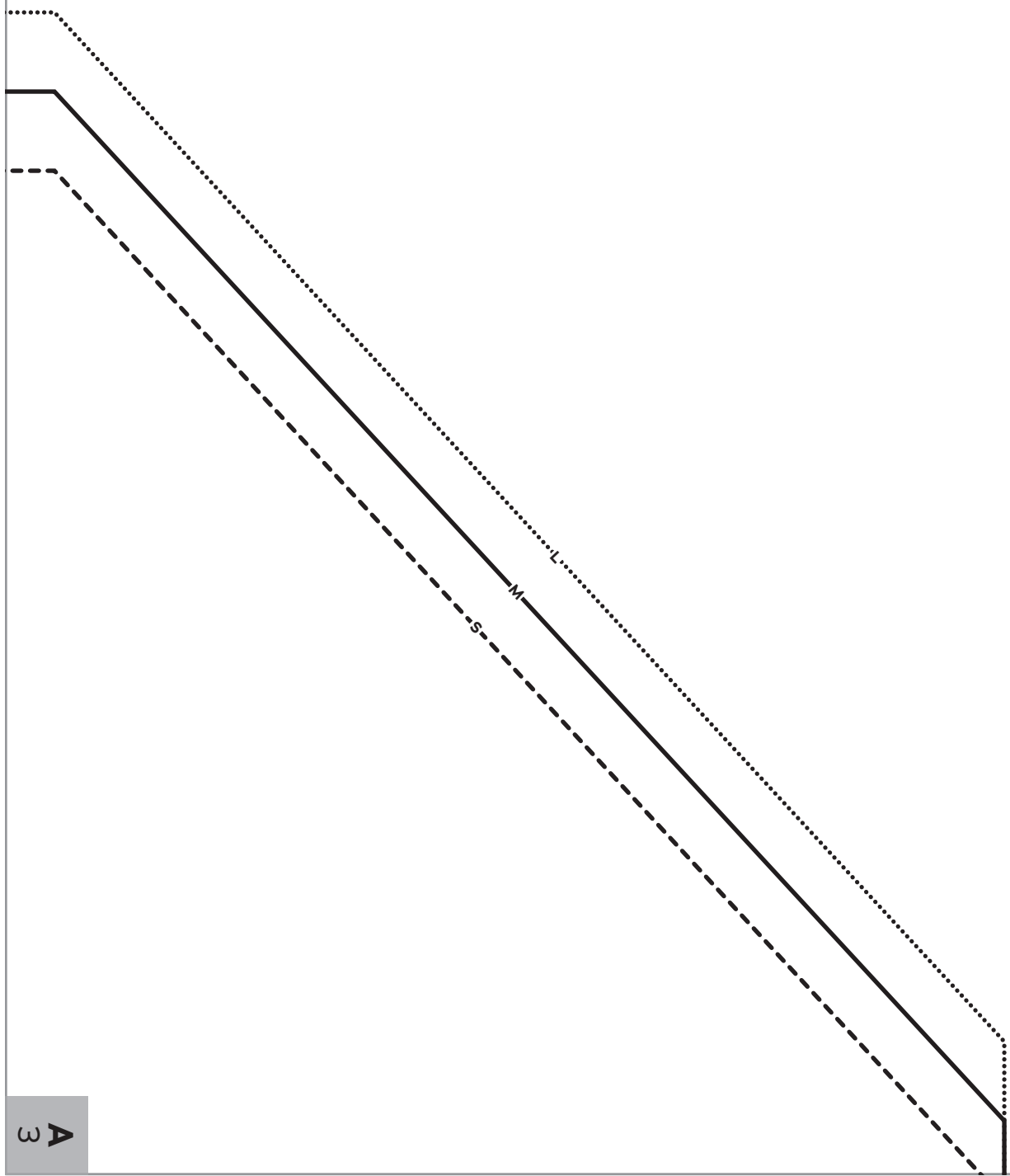
FOLD BACK THIS MARGIN

**A**  
3

ADJUST HEIGHT OF PA

ALIGN

D  
2



A  
3



FOLD BACK THIS MARGIN

TURN HERE IF USING VEILING LESS THAN 12" WIDE



FOLD BACK THIS MARGIN

LOWER FINISHED EDGE OF VEIL HERE

FOLD BACK THIS MARGIN

A  
3



**CHARLOTTE  
BERET**

**3**

Veil

Cut 1 veiling on fold

FOLD